



**East Pye Solar  
Consultation Report Appendix 5: Statement of  
Community Consultation Materials**

Revision 1

March 2026

Planning Inspectorate Reference: EN0110014

Document Reference: APP/5.6

APFP Regulation 5(2)(d)

## Contents

1	<b>Early Working Draft of Statement of Community Consultation (SoCC) .....</b>
2	<b>Letter to Norfolk County Council regarding SoCC consultation .....</b>
3	<b>Letter to South Norfolk Council regarding SoCC Consultation .....</b>
4	<b>Draft Statement of Community Consultation .....</b>
5	<b>Published Statement of Community Consultation.....</b>
6	<b>Section 47 Notice as placed in Eastern Daily Press (4 June 2025) .....</b>
7	<b>Section 47 Notice as placed in Diss Express (6 June 2025) .....</b>

# 1 Early Working Draft of Statement of Community Consultation (SoCC)



# East Pye

S O L A R

## Draft Statement of Community Consultation

For consultation with Norfolk County Council and South Norfolk Council

March 2025

## Table of Contents

1	Introduction .....	3
2	The Project .....	5
3	About us .....	7
4	The DCO consenting process .....	8
5	Our consultation process.....	10
6	Method of consultation.....	12
7	Who we will consult.....	13
8	When we will consult.....	17
9	What we will consult on .....	18
10	How we will consult.....	19
11	Environmental information .....	27
12	Indicative Project timeline* .....	28
13	Next steps and contact details .....	29
	Appendix 1 Gateway Organisations and Community Groups.....	30

DRAFT

# 1 Introduction

- 1.1 East Pye Solar Limited ('we' or 'the Applicant') is preparing this Statement of Community Consultation ('SoCC') in connection with its application for a Development Consent Order ('DCO') for a solar photovoltaic ('PV') electricity generating station and other associated development comprising a battery energy storage system ('BESS') substations, grid connection infrastructure and other infrastructure known as East Pye Solar ('the Project'), located on land near Long Stratton in South Norfolk.
- 1.2 The Project will deliver approximately 500 megawatts ('MW') of electricity, operating over 60 years. Clean electricity generated by the Project will be supplied to the National Grid at a new substation located southwest of the Project site. The Project will provide enough energy to power approximately 115,000 homes annually.
- 1.3 The Project would connect into the existing National Electricity Transmission System 400kV overhead line, which runs north to south between Norwich Main and Bramford substations.
- 1.4 As the Project's anticipated generation capacity exceeds 50 MW it is classified as a Nationally Significant Infrastructure Project ('NSIP'). This means the Project requires a DCO under the Planning Act 2008 ('the Act'), which will be determined by the Secretary of State. The Act requires promoters of NSIPs to carry out a formal stage of consultation, referred to as a 'Statutory Consultation', to take place over a minimum of 28 days.
- 1.5 We are intending for Phase Two (statutory) consultation to take place for just over six weeks, from Wednesday 18 June until Friday 01 August 2025.
- 1.6 Prior to this statutory stage of consultation, and in accordance with Section 47 of the Act, consultation is being sought on a draft SoCC with the Local Planning Authorities ('LPAs'). These authorities are South Norfolk Council and Norfolk County Council.
- 1.7 Comments received from the LPAs on the draft SoCC will be considered by the Applicant when preparing the final SoCC for publication.
- 1.8 The final SoCC will be publicised and made available for inspection by the public. It is anticipated that this will take place two weeks in advance of Phase Two (statutory) consultation, launching in Summer 2025. The final SoCC will be publicised in accordance with Section 47 of the Act, published on our website ([www.eastpyesolar.com](http://www.eastpyesolar.com)), with hard copies available on request, and for inspection at public venues as described in **section 10.37: Community Access Points**.
- 1.9 As required by Section 47(6) of the Act, we will publish a Section 47 notice in local newspapers for one week to advertise that the SoCC has been published. It is anticipated that the notices will be published in the Eastern Daily Press and Diss Express on 4 June and 5 June 2025, respectively, according to publication days.
- 1.10 Phase Two (statutory) consultation will be undertaken in accordance with the methodology and commitments set out in the final SoCC as published.

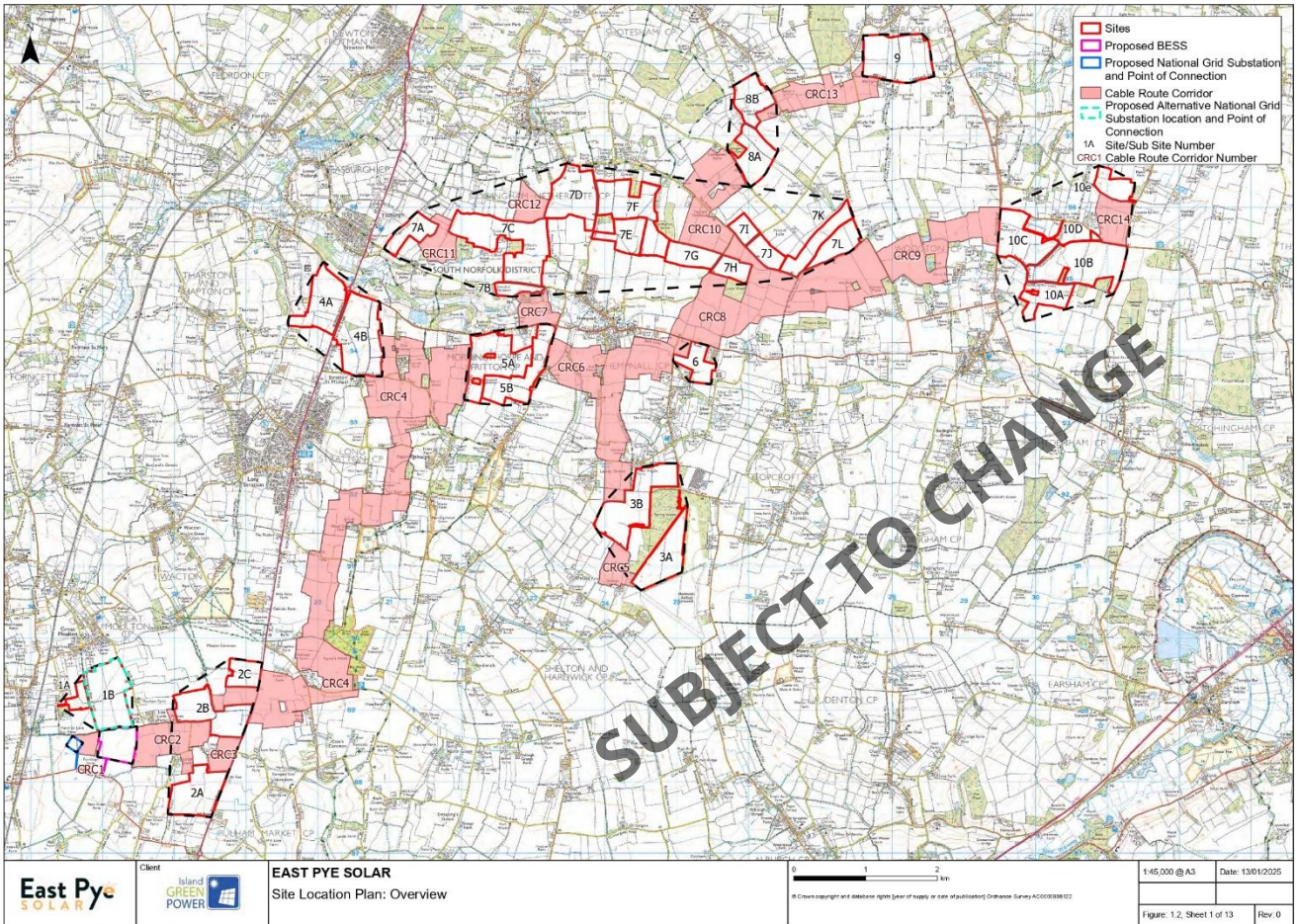
- 1.11 Prior to this phase of statutory consultation, the Applicant has undertaken non-statutory consultation and engagement (Phase One consultation) to inform the emerging proposals for the Project and shape the ongoing design development. This included a six-week phase of public consultation, which was held from Wednesday 23 October to Friday 06 December 2024.
- 1.12 The aim of Phase One consultation was to introduce the Applicant, present the Applicant's early-stage proposals for the Project and give individuals an early opportunity to have their say and share their views and local knowledge.
- 1.13 The Applicant's Phase One consultation involved welcoming over 642 people to six in person information events and one community webinar, receiving over 350 pieces of feedback via the feedback form, email and letters. A community consultation postcard was sent to over 7,000 households and businesses within the vicinity of the Project, and the Phase One consultation was advertised in the Eastern Daily Press and Diss Express to publicise the opportunities to provide feedback.
- 1.14 Experience from Phase One consultation – and ongoing engagement since its close – have also informed the proposed approach to Phase Two (statutory) consultation, as set out in this draft SoCC.

## 2 The Project

- 2.1 The Project spans a number of land parcels that will be developed for solar PV, associated development including BESS and substations, biodiversity enhancements and landscaping. Taken together the Project covers approximately 2,215 hectares ('ha') south of Norwich and north of Harleston.
- 2.2 The Project is grouped into Sites 1 – 10, the National Grid Substation Site and the BESS Site. Sites 3 to 10 are concentrated to the east of Long Stratton, with an additional cluster of land parcels including Sites 1 and 2, and the BESS Site and National Grid Substation Site located south of Great Moulton, approximately 6.5km to the south-west.
- 2.3 Currently, the Project includes a 'Cable Corridor Options Area'. This is the broad area within which the Applicant is seeking to arrange for the cable route connections between the solar PV panels and the new National Grid substation where the Project will connect to the National Grid. Through consultation and further design, this corridor has been further refined since Phase One consultation and will be finalised ahead of submitting the DCO application.
- 2.4 The proposed Project area (referred to as the 'Site') is shown in **Figure 1** (to be updated for the final published SoCC). This map shows the current extent of land required for the Project.
- 2.5 The Project is anticipated as being able to deliver approximately 500 MW of renewable electricity to the National Grid and store up to 500 MWh (megawatt-hours) of energy in the BESS.
- 2.6 The Project has the potential to:
- Power the equivalent of 115,000 homes annually;
  - Contribute to climate targets and the decarbonisation of our electricity supply;
  - Boost Norfolk's emerging renewable energy industry, securing clean, affordable energy while providing investment and job opportunities in the county;
  - Enhance the natural environment by delivering a net gain in biodiversity; and
  - Provide community and local benefits for the surrounding area, with a commitment to work with the local community to identify and define community benefits.
- 2.7 The operational phase of the Project is expected to be 60 years. At the end of this period, a decommissioning plan will be enacted. This plan will require the removal of the solar PV panels, substation(s) and the BESS, and the restoration of the Site to its

original use. The new National Grid Substation will be retained as it will form part of the transmission network.

**Figure 1: Site Location Plan**



The above plan is correct as of 13 February 2025.

### 3 About us

- 3.1 The DCO application for the Project is being prepared by East Pye Solar Limited.
- 3.2 East Pye Solar Limited is a 100 per cent subsidiary of IGP UK Projects Limited, which is in turn a 100 per cent subsidiary of Island Green Power's UK group holding company, Island Green Power Group Limited (IGP).
- 3.3 Established in 2013, IGP has delivered almost 40 solar and battery storage projects worldwide totalling more than two gigawatts of clean, renewable energy. This includes 20 projects in the UK.
- 3.4 IGP specialises in the development of utility-scale solar projects and battery energy storage systems; overseeing the entire development process from start to finish, including sourcing land, securing grid connections and obtaining planning consents.
- 3.5 IGP's mission is to help the UK decarbonise and meet net zero goals, increasing solar energy generation and making more renewable energy possible while drastically reducing our carbon emissions.
- 3.6 IGP has appointed a professional project team to provide support and expertise throughout the project development process for the Project. Together, the project team has significant experience working across solar and DCO projects, and in developing plans that are sensitive to the needs of the local community and surrounding environment.

## 4 The DCO consenting process

- 4.1 The Project is classified as a NSIP because it comprises a solar energy generating station with a capacity of over 50MW.
- 4.2 The development consenting regime for an NSIP comes under the Act and associated guidance. This means that we need to submit a DCO application for the construction, operation, maintenance and decommissioning of the Project to the Planning Inspectorate ('PINS'), the body responsible for managing the examination process for NSIPs.
- 4.3 Should PINS accept the DCO application, they will appoint an Examining Authority to examine the DCO application. Anyone, including landowners and members of the public, will be able to submit a Relevant Representation to PINS and become an Interested Party. Any Interested Party is then able to participate in the Examination process, for example by attending hearings.
- 4.4 After the Examination period ends, the Examining Authority will make a recommendation to the Secretary of State (SoS) for Energy Security and Net Zero on whether to grant development consent. The SoS will make the final decision on the DCO application. **Table 1** provides an overview of the key stages of the DCO process.
- 4.5 Before submitting an application for development consent, the Applicant must carry out statutory consultation in accordance with the Act. This document – the SoCC – has been prepared in accordance with Section 47(1) of the Act and associated guidance. It explains how we intend to carry out Phase Two (statutory) consultation with the local community during the pre-application stage of the DCO process, sharing information about and inviting feedback on the Project.
- 4.6 We currently anticipate submitting our DCO application to PINS in Winter 2025. Subject to the DCO being granted, the earliest construction would start is 2028 (see **Section 0**).
- 4.7 More information about the stages of the DCO application process and how you can have your say can be found on the PINS website<sup>1</sup>.

---

<sup>1</sup> <https://www.gov.uk/guidance/nationally-significant-infrastructure-projects-the-stages-of-the-nsip-process-and-how-you-can-have-your-say>

**Table 1: DCO application process**

Stage	Description
1. Pre-application	We, as the Applicant, must consult the community and statutory consultees in compliance with the Act. To demonstrate this to PINS, the DCO application we submit will include a Consultation Report setting out our method for consulting, the feedback received in response to the consultation, and how this has influenced our proposals.
2. Acceptance	PINS, on behalf of the SoS, has 28 days to decide whether the application meets the required standards to proceed to the Examination. This includes consideration of whether our consultation has been adequate.
3. Pre-Examination	Further to the application being accepted, the Examining Authority will be appointed. Anyone can submit a Relevant Representation to PINS and become an Interested Party to provide comments at the Examination stage, speak at hearings and hear about events and decisions as well as the progress of the application. The Examining Authority will hold a preliminary meeting and set out the timetable for Examination.
4. Examination	The Examining Authority has up to six months to complete the Examination of the DCO application. This will involve a series of open floor / public hearings, compulsory acquisition hearings and topic specific hearing. This stage will also provide opportunities for Interested Parties to submit your comments in writing or orally at hearings.
5. Decision	A recommendation to the SoS will be issued by the Examining Authority within three months of the close of the Examination. The SoS then has a further three months to issue a decision on whether to grant development consent for the Project.

## 5 Our consultation process

- 5.1 The proposed approach is an iterative two-phase consultation process for the Project whereby feedback and information received in response to the consultation will inform the refinement of the Project design and options.
- 5.2 This includes:
- Phase One (non-statutory) consultation, which was held for over six weeks between 23 October and 6 December 2024 to:
    - Introduce the proposals and the Applicant;
    - Seek initial feedback on the Project to inform design refinements;
    - Identify local schemes or initiatives the Project could support or deliver; and
    - Understand any opportunities to improve consultation methods ahead of Phase Two (Statutory) consultation.
  - Phase Two (statutory) consultation, to be held for six weeks across Summer 2025. Consultation will seek to gather feedback on the proposed design, proposed mitigation and information presented in the Preliminary Environmental Information Report ('PEIR'). See **Section 9: 'What we will consult on'** for the objectives of our Phase Two Consultation.
- 5.3 In carrying out Phase One consultation on the emerging proposals for the Project, the Applicant sought to help stakeholders and local communities understand the Project and how they can become involved at the pre-application stage.
- 5.4 Phase One consultation – such as attendance at public information events and the levels and format of feedback received – has also been considered by the Applicant when preparing their proposed approach to statutory consultation.
- 5.5 The Project team has considered all feedback received during Phase One consultation in depth. This process has informed further updates to the proposals of the Project.
- 5.6 The Applicant intends to publish a Consultation Summary Report ('CSR') in Spring 2025. The purpose of the CSR is to present the feedback received at Phase One consultation and explain how this is being considered by the Project team. The CSR will be published on our website and its availability will be publicised through notifying key stakeholders and community members.
- 5.7 The Applicant is now preparing to undertake a statutory phase of consultation, described in this draft SoCC. This is expected to be the last opportunity for stakeholders to provide feedback before the Applicant submits its application for development consent, expected in Winter 2025.
- 5.8 Following this Phase Two consultation, a Consultation Report will be submitted to PINS as part of the DCO application. This Consultation Report will describe and

evidence the consultation undertaken, the level of engagement with this consultation, and how consideration has been given to feedback received.

DRAFT

## 6 Method of consultation

- 6.1 We are committed to good practice in public consultation. Consultation for the Project is also informed by the latest government guidance for NSIPs, published in April 2024<sup>2</sup>.
- 6.2 We will employ a variety of consultation methods so that our consultation is appropriate and accessible. The methodology has had regard to the experience of the Phase One (non-statutory) consultation on the Project. The Statements of Community Involvement (SCI) adopted by the local authorities have also been reviewed and considered.
- 6.3 Consultation and communication methods will include:
- Project specific freephone, email and freepost address.
  - Project website.
  - Direct mail of consultation information to properties within the defined core consultation zone (see **Section 7.3**).
  - Information posters issued for display at public venues within the core consultation zone.
  - Use of local print and online media – editorial and advertising.
  - In-person information events at publicly accessible locations.
  - Virtual webinar format information event.
- 6.4 Provision of information in alternative languages and formats on request. For further details please see **Section 8 'How we will consult'**.
- 6.5 The information and materials we will use to inform the consultation will provide details of:
- The extent of the land proposed for the Project.
  - Preliminary environmental information, including results from ongoing assessments, descriptions of potential environmental effects arising from the Project, and proposals for how these could be managed and mitigated.
  - A proposed design, setting out:
    - Areas for solar PV, BESS and the new National Grid Substation, and associated infrastructure.
    - Areas for mitigation and enhancement measures.
    - The Cable Corridor Options Area.

---

<sup>2</sup> <https://www.gov.uk/guidance/planning-act-2008-pre-application-stage-for-nationally-significant-infrastructure-projects>

## 7 Who we will consult

7.1 We are seeking to engage with a range of individuals and groups in the local community.

7.2 In accordance with Section 47 of the Act, the SoCC must outline how we propose to consult with people living 'in the vicinity of the land' for the Project. This also encompasses those working within the vicinity of the land proposed for the Project.

### 7.3 **Core consultation zone**

7.4 To determine the core consultation zone, we considered where may be directly or indirectly impacted by the Project as a result of its construction, operation, maintenance, and decommissioning.

7.5 Having considered these impacts, we then determined an appropriate core consultation zone by extending a minimum distance of two kilometres ('km') from the site boundaries of the Solar Panel Areas, the BESS and the new National Grid Substation, and 500 metres ('m') from the edge of the Cable Corridor Options Area.

7.6 The zone has been extended further, where proportionate, to include reasonable consideration of:

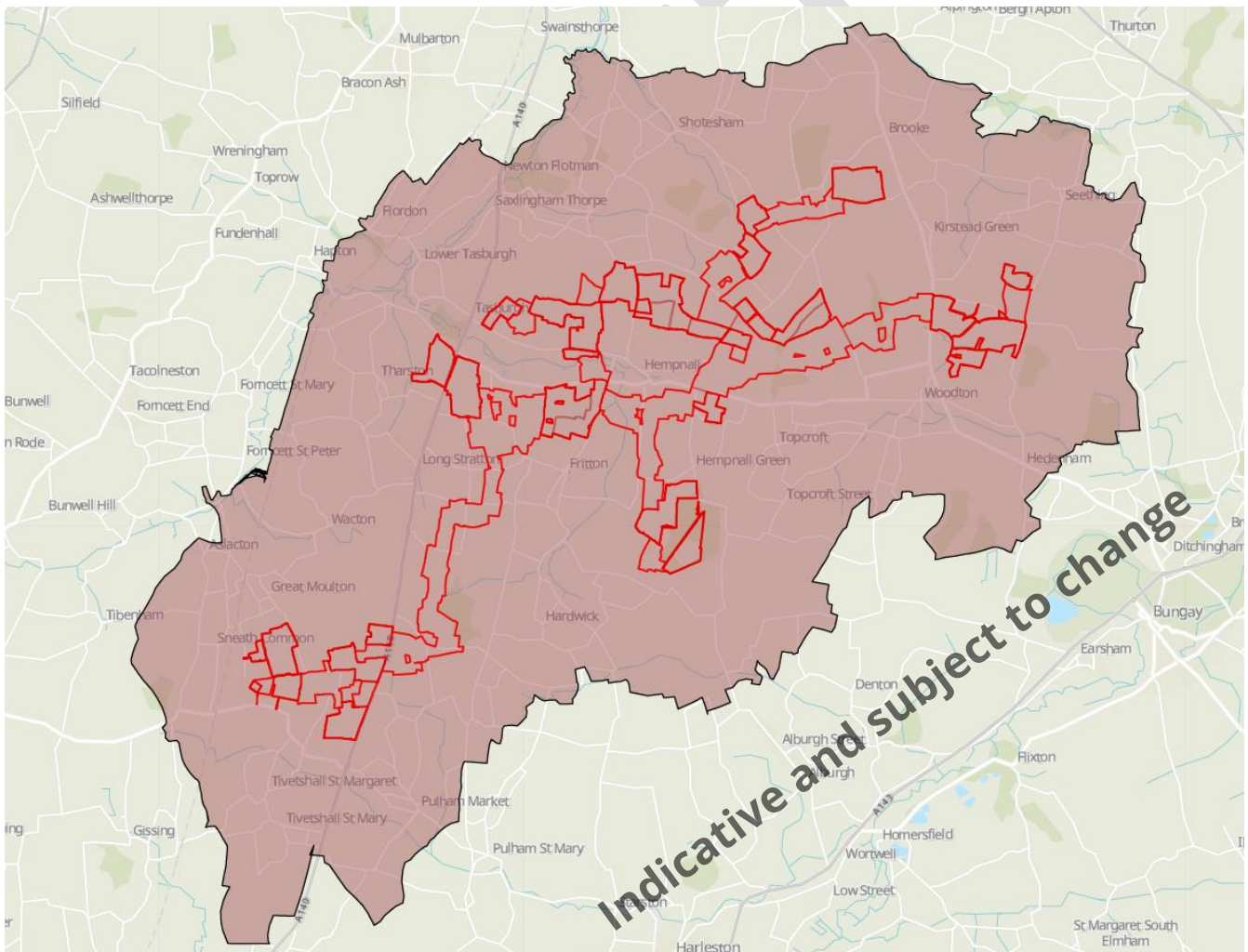
- Existing natural and human geographical boundaries, for example, railway lines, A-roads and/or motorways, for example the Great Eastern Main Line between Diss and Norwich, and the A416.
- Coverage of the parishes that host any of the proposed Solar Panel Areas, BESS and the new National Grid Substation as follows:
  - Brooke Parish Council;
  - Great Moulton Parish Council;
  - Hedenham Parish Meeting;
  - Hempnall Parish Council;
  - Howe Parish Meeting;
  - Kirstead Parish Meeting;
  - Long Stratton Town Council;
  - Morningthorpe and Fritton Parish Council;
  - Pulham Market Parish Council;
  - Saxlingham Nethergate Parish Council;
  - Seething Parish Council;
  - Shelton and Hardwick Parish Council;
  - Shotesham Parish Council;
  - Tasburgh Parish Council;
  - Tharston and Hapton Parish Council;
  - Tivetshall Parish Council;
  - Wacton Parish Council; and
  - Woodton Parish Council

- Areas where we propose to undertake additional works to enable construction transport or road modifications.

7.7 We will seek to engage directly with those people who live and work, or have an interest, in land within our core consultation zone including residents, local businesses, and community organisations (including parish councils) to raise awareness and encourage participation in the consultation through a selection of communication channels (see **Section 10**).

7.8 The core consultation zone is shown in **Figure 2**. There are over 8,439 properties within the core consultation zone, which is subject to change based on the final Red Line Boundary for the Project at Phase Two consultation and available Royal Mail data.

**Figure 2: Red-line Project boundary and core consultation zone**



## 7.9 **Consulting people beyond the core consultation zone**

7.10 It is recognised that people who live and work beyond the core consultation zone may have an interest in our proposals and wish to participate in the consultation.

7.11 To give these individuals and organisations the opportunity to participate in this Statutory consultation, we will raise awareness in the following ways:

- Directly notify any individual who has registered to receive information about the Project;
- Publish a Section 48 notice in the local and national press and London Gazette;
- Advertise the consultation in local media outlets reaching audiences beyond the core consultation zone;
- Publish consultation materials so they are available to view online; and
- Fulfil requests for copies of the consultation materials through the Project communication channels.

7.12 We will also engage those parties representing the interests of those communities which lie beyond the core consultation zone including:

- Members of Parliament representing the host constituencies:
  - Ben Goldsborough MP (South Norfolk); and
  - Adrian Ramsay MP (Waveney Valley).
- Norfolk County Council electoral division members (councillors)
- South Norfolk Council ward members (councillors)
- Parish councils that host or the Project boundary (see **section 7.6**).
- Gateway organisations and community groups (see **Appendix 1**).

7.13 To give these individuals and organisations the opportunity to participate in this second stage of consultation, we will raise awareness in the following ways:

- Directly notify all those who have registered their interest in the Project about consultation;
- Advertise the consultation in the Eastern Daily Press and Diss Express, reaching audiences beyond the core consultation zone; and
- Publish consultation materials online via the Project website and make them available in hard copy on request via our contact details.

7.14 **Consulting with under-represented or seldom heard groups**

- 7.15 The Applicant is committed to ensuring that the consultation process, and associated communications, reach as many parts of the community as practicable. We recognise that there are individuals, groups and communities for whom there may be certain barriers which could prevent them from fully participating in the consultation – or make them less likely to participate in or respond to traditional consultation techniques.
- 7.16 The Applicant has identified various ‘under-represented’ or ‘seldom-heard’ groups and individuals who may be less likely to engage with, or participate in, consultation. See **Appendix 1** for a list of the organisations and community groups we will contact.
- 7.17 The Applicant’s consultation methodology (see **Section 10**) has been developed to accommodate communicating as effectively as possible with these groups so they can have their day. Requests for specific consultation activity to cat for their members will be considered on a case-by-case basis. This will then be agreed and planned with the requesting organisations.

DRAFT

## 8 When we will consult

- 8.1 The Applicant will hold their Phase Two consultation for a period of six weeks.
- 8.2 This is consistent with the approach taken to the non-statutory Phase One consultation and exceeds the statutory requirement of 28 days.
- 8.3 The specific dates of Phase Two consultation are yet to be defined but will be confirmed and included in the final published version of the SoCC.
- 8.4 For purposes of this draft, the Applicant is working towards the dates of **Wednesday 18 June and Friday 01 August 2025** for the Phase Two consultation period.
- 8.5 Please see **section 10.36** for our proposed venues for public information events. While the proposed consultation period overlaps with the start of the summer holiday period for schools, all information events will be held before school holidays begin on 22 July 2025.

DRAFT

## 9 What we will consult on

- 9.1 The aim of our Phase Two consultation is to ensure that consultees have meaningful opportunities to understand and influence Project proposals prior to the submission of a DCO application.
- 9.2 The Applicant's Phase Two consultation will seek feedback on updated Project proposals that have had regard to feedback received to date.
- 9.3 It will include publishing the results of ongoing environmental surveys and preliminary assessments of likely significant effects, and studies that have been carried out to date. These will be presented in a PEIR and accompanying Non-Technical Summary ('NTS').
- 9.4 This will report on any potential likely significant environmental effects related to the Project and measures to mitigate these effects.
- 9.5 The extent of the land proposed for the Project will be presented in the consultation materials.
- 9.6 Our Phase Two consultation will provide an opportunity to comment on:
- The design for the 10 Solar PV Sites in which the electricity generating station and BESS and new National Grid Substation would be contained;
  - The proposed Cable Corridor Options Area in which an underground cable would be installed to connect the Solar PV Sites to one another and provide an electrical connection into the National Grid;
  - The potential environmental effects of the Project detailed in the PEIR which sets out the results of our preliminary environmental assessments and mitigation measures;
  - The timescales and next steps for the Project; and
  - Anything else you think we need to consider, such as community benefits, recreational routes, etc.

## 10 How we will consult

- 10.1 We will invite consultees to view, discuss and comment on our proposals.
- 10.2 We have identified a number of ways in which people can:
- Access information about our proposals and their potential effects;
  - Review and comment on consultation documents at a time which is convenient to them; and
  - Express their views regarding the Project by submitting feedback to the Phase Two consultation via easy to use and accessible methods.
- 10.3 **Project website**
- 10.4 A dedicated Project website ([www.eastpyesolar.co.uk](http://www.eastpyesolar.co.uk)) was launched in September 2024 to host Project information.
- 10.5 All of the consultation materials will be available to view and download, free of charge, on the Project website via the Documents page: <https://www.eastpyesolar.co.uk/documents>
- 10.6 It will be possible to submit a response to the consultation via the website using a dedicated online feedback form during the consultation period.
- 10.7 The website will also allow people to register their contact details with the Project so they can receive future updates during and after the consultation period.
- 10.8 **Direct communications**
- 10.9 Direct communications – via a leaflet or postcard – will be issued to all properties within the core consultation zone (see **Figure 2**) and to any other parties who registered to be kept informed about the Project by post.
- 10.10 The written communication will notify local residents and businesses of the consultation period, opportunities to find out more information (including details of public information events), how to provide feedback, and the response deadline for comments to be submitted.
- 10.11 The direct communication will be printed and posted prior to the Phase Two consultation period commencing.
- 10.12 **Project Information Booklet**
- 10.13 A Project Information Booklet will be published on the Project website at the start of the Phase Two consultation. This will provide a summary of the proposals we are consulting on, details of how people can take part in the consultation, how feedback

will be considered and used to inform proposals, and how we will provide information on the outcome of the consultation.

10.14 Printed copies of this document will be available to take away at in-person information events and Community Access Points (CAPs). Copies will also be made available on request in digital or hard copy format, free of charge.

10.15 **Feedback Form**

10.16 A feedback form will be made available to enable people to provide feedback on the proposals. Specific questions will be included on particular areas on which we are seeking comment, however, no questions will be mandatory and all comments made on the form will be accepted.

10.17 An online version of the feedback form will be hosted on the Project website so that feedback can be provided electronically.

10.18 Hard copy forms will be available at in-person public information events and at CAPs. An online PDF version of the feedback form will also be available to download from the Project website. Copies of the feedback form will also be made available on request in digital or hard copy format, free of charge.

10.19 While the feedback form is intended to encourage and support the provision of feedback, we recognise some people may prefer to provide written comments outside set questions. All written comments will be accepted and can be submitted during the Phase Two consultation period by post to FREEPOST EAST PYE SOLAR (no stamp or further address details required) or by email to [info@eastpyesolar.co.uk](mailto:info@eastpyesolar.co.uk)

10.20 **Technical documents, maps and plans**

10.21 The PEIR will be published at the start of the Phase Two consultation period. This document will provide details of the Project and preliminary environmental assessments undertaken to date.

10.22 The PEIR will include dedicated chapters on each topic considered to give rise to likely significant environmental effects associated with the Project. These chapters will be supported by appendices and figures. A Non-Technical Summary of the PEIR will also be available.

10.23 The full PEIR will be available to view and download, free of charge, on the Project website and will be available to view in printed format at public information events.

10.24 Requests for a printed hard copy of the PEIR will be reviewed on a case-by-case basis. To cover printing and postage costs, a charge may apply, which will be calculated based on cost per individual volume requested. This charge will be included in the final SoCC, upon finalisation of all technical documents.

10.25 **Meetings and briefings**

- 10.26 Meetings and briefing sessions may be arranged with local parish councils, elected members and key local stakeholder groups prior, during and following Phase Two consultation.
- 10.27 **Information events**
- 10.28 We intend to hold at least six in-person public information events during Phase Two Consultation.
- 10.29 We intend to schedule these events towards the start of the consultation period, with a minimum of three weeks' notice between events being published in the final SoCC and the first event. This is to ensure all events are held prior to the start of the school summer holidays, in line with Norfolk County Council's term times<sup>3</sup>. It also allows time for the events to be effectively publicised and for consultees to access and consider consultation information before attending, while allowing time after events for attendees to prepare and submit feedback ahead of the response deadline.
- 10.30 Events will be held across different days of the week and cover a range of times to accommodate different working hours and care schedules to promote accessibility and attendance. This will include holding an event on a Saturday, subject to venue availability, and events running into the evening.
- 10.31 At events, attendees will be able to find out information about the Project and what we are consulting on. Members of the Project team will be present to discuss the proposals and answer questions.
- 10.32 In-person information events are proposed to be held at venues within the core consultation zone that are publicly accessible and accommodate the needs of individuals with limited mobility. Information available at these events will include:
- This SoCC (for reference only).
  - Event display panels and boards (for viewing only).
  - Maps of the Project (for viewing only).
  - Project Information Booklet (for reference and to take away).
  - Feedback Form (for reference and to take away).
  - The PEIR and accompanying NTS (for reference only).
- 10.33 The Applicant will also hold one online information event (webinar) via Zoom, the date and time of which will be publicised along with details of the in-person events.
- 10.34 The webinar will be held for anyone to join via telephone or the internet, with participants needing to register before attending. The format of this webinar will involve the presentation of information consistent with that made available at in

---

<sup>3</sup> <https://www.norfolk.gov.uk/article/38213/Term-dates-and-school-holidays-2024-2025>

person events (i.e. display panels) by representatives from the Project team, followed by a moderated questions and answer session. Participants will be invited to submit questions during the webinar. A recorded version of the webinar will be made available upon request after the session.

- 10.35 Based on the indicative consultation period set out in **Section 8.4**, information events will be held across a three-week window between **Monday 30 June and Monday 21 July 2025**.
- 10.36 An indicative list of in-person information event venues is set out in **Table 2** below to show our potential list of locations. Please note that these details will be informed by venue availability and confirmation that they meet our health and safety and capacity requirements. A confirmed schedule of information events will be included in the final SoCC and published ahead of Phase Two consultation commencing.

**Table 2: Potential Information Event Venues**

Potential Information Event Venues
<p><b>Aslacton and Great Moulton Village Hall</b></p> <p>Carr Lane, Great Moulton, NR15 2LA</p>
<p><b>Brooke Village Hall</b></p> <p>Norwich Road, Brooke, Norfolk, NR15 1AB</p>
<p><b>Hempnall Village Hall</b></p> <p>Bungay Road, Hempnall, Norfolk, NR15 2NG</p>
<p><b>Long Stratton Village Hall</b></p> <p>Ipswich Road, Long Stratton, Norfolk, NR15 2TA</p>
<p><b>Saxlingham Nethergate Village Hall</b></p> <p>Steward Close, Saxlingham Nethergate, Norfolk, NR15 1AN</p>
<p><b>Seething and Mundham Village Hall</b></p> <p>Wheeler Lane, Seething, Norfolk, NR15 1EJ</p>
<p><b>Tasburgh Village Hall</b></p> <p>Grove Lane, Norwich, NR15 1LR</p>
<p><b>Woodton Village Hall</b></p> <p>Hempnall Rd, Woodton, Bungay NR35 2NG</p>

### 10.37 **Community Access Points**

10.38 Community Access Points (CAP) are deposit locations where we will make hard copies of the SoCC and relevant Phase Two consultation materials available.

10.39 **Table 3** below indicates where the relevant Phase Two consultation materials will be made available.

10.40 The materials include:

- Copies of this SoCC for reference and taking away. This will be available at CAPs before the Phase Two consultation commences;
- Copies of the Project Information Booklet for reference and for taking away;
- Copies of the Feedback Form for reference and taking away; and
- A copy of the PEIR Non-Technical Summary for reference only.

10.41 A copy of the PEIR will be available at Long Stratton Library for reference only.

10.42 All potential CAPs host computers with internet access to enable access to the full PEIR via the Project website. While access to computers at the libraries is free, a membership for the library may be required.

**Table 3: Community Access Points**

<b>Location</b>	<b>Current Opening Times*</b>
<b>Long Stratton Library</b> The Street, Long Stratton, NR15 2XJ	Monday to Friday: 8am – 7pm Saturday and Sunday: 10am – 4pm
<b>Loddon Library</b> 31 Church Plain, Loddon, NR14 6EX	Monday to Friday: 8am – 7pm Saturday: 8am – 4pm Sunday: 10am – 4pm
<b>Bungay Community Library</b> Wharton Street, Bungay, NR35 1EL	Monday: 9am – 2:30pm Tuesday to Saturday: 9am – 5pm Sunday: closed
<b>Poringland Library</b> Overtons Way, Poringland, Norwich, NR14 7WB	Tuesday, Wednesday and Saturday: 10am – 7pm Monday and Friday: 2pm – 7pm Thursday and Sunday: Closed

10.43 Opening times and accessibility may vary, so it is advised to check with venues directly for up-to-date information.

10.44 **Availability of materials**

10.45 **Table 4** below summarises the availability of consultation materials during the Phase Two consultation period.

**Table 4: Availability of consultation materials**

Document	In-person information events	Project website*	Hard copy on request	Direct mailed	Community Access Points
<b>Preliminary Environmental Information Report (PEIR)</b>	Yes	Yes	Yes (charges apply)	No	Yes (only at Long Stratton Library)
<b>PEIR Non-Technical Summary (NTS)</b>	Yes	Yes	Yes (charges apply)	No	Yes (at all libraries)
<b>Community Consultation Postcard/Leaflet</b>	No	Yes	Yes	Yes	No
<b>Project Information Booklet</b>	Yes	Yes	Yes	No	Yes
<b>Feedback Form</b>	Yes	Yes	Yes	No	Yes
<b>Event Displays and Maps</b>	Yes	Yes	No	No	No
<b>Statement of Community Consultation (SoCC)</b>	Yes	Yes	Yes	No	Yes

\*Documents and materials will be available as PDFs to view and download free of charge from the 'Documents' section of the Project website: <https://www.eastpyesolar.co.uk/documents>

10.46 **Open communication**

10.47 The Project communication channels will remain open throughout the pre-application stage. Outside the Phase Two consultation period, stakeholders may speak to a member of our Project community relations team.

- 10.48 During the consultation period, written feedback can be provided by:
- Submitting an online feedback form through the Project website
  - Completing a PDF version of the hard copy feedback form and submitting via email: [info@eastpyesolar.co.uk](mailto:info@eastpyesolar.co.uk)
  - Completing a printed copy of the feedback form and submitting it at an in-person information event or returning it to FREEPOST EAST PYE SOLAR (no stamp required)
  - Sending an email to: [info@eastpyesolar.co.uk](mailto:info@eastpyesolar.co.uk)
  - Providing comments in writing and posting them to FREEPOST EAST PYE SOLAR (no stamp required)
- 10.49 Feedback must be received by 23:59 on the closing date. Written feedback submitted via FREEPOST that is received after this date will be accepted up to two weeks after the deadline.
- 10.50 Questions and requests can be made using the communication channels above and by calling the Project freephone line 0808 281 3175 (open 09:00 – 17:00 Monday to Friday, with a voice message service operating outside of these hours so a callback can be made if requested).
- 10.51 **Section 48 Notice**
- 10.52 As required by Section 48 of the Act, we will publish a Section 48 Notice advertising our intention to submit a DCO application and the Phase Two consultation in local newspapers in the vicinity of the Project for two consecutive weeks, and a national newspaper and the London Gazette for one week.
- 10.53 The local newspapers in which the Section 48 Notice will appear are the Eastern Daily Press and Diss Express.
- 10.54 **Media, advertising and publicity**
- 10.55 To raise awareness about the Project and consultation within and beyond the core consultation zone, we will issue a media release at the start of the consultation to provide an overview of the Project, why we are consulting and how people can access information about the Project, including dates of information events (online and in-person) and the deadline for receipt of responses.
- 10.56 In addition to publishing a formal Section 48 Notice in local and national newspapers, we will place advertisements in local media to publicise the consultation and information events taking place (online and in-person).
- 10.57 Posters publicising the consultation will be issued to information event venues, and the clerks of parish councils for display on local parish notice boards. They will also be

made available to other community venues and local information points within the core consultation zone. The posters will be displayed at the discretion of the community venue or local information point.

**10.58 Changes to consultation activities**

10.59 Should any change to our consultation activities be required due to circumstances outside our control, details will be publicised in line with the methods set out in this SoCC to the extent it is reasonable and proportionate to do so.

**10.60 Coordination with other NSIP developers**

10.61 The Applicant recognises that there are a number of other NSIPs in the South Norfolk District and Norfolk County. Ahead of the Phase Two consultation, the Applicant will seek to engage with third-party developers to determine the timing of any defined consultation periods and activities, including when in-person events will be taking place. Where practicable, the Applicant will try to ensure that in-person events do not take place on the same days to ensure all stakeholders can take part in the consultations for all projects.

DRAFT

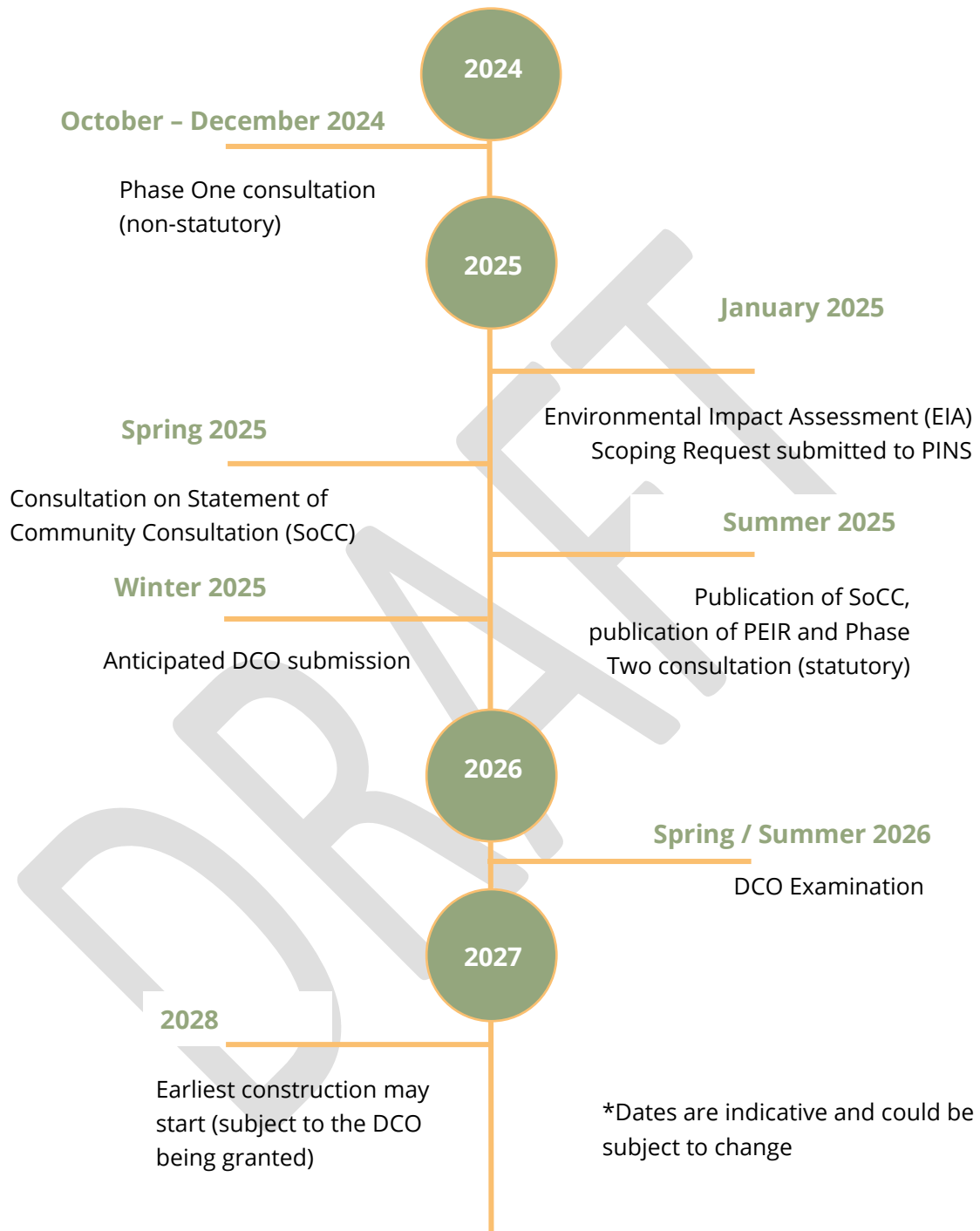
## 11 Environmental information

- 11.1 East Pye Solar is classified as an Environmental Impact Assessment ('EIA') development under the Infrastructure Planning (Environmental Impact Assessment) Regulations 2017. The DCO application will therefore require an EIA to be carried out to identify and evaluate the likely significant effects of the Project on the environment. The EIA will identify measures to mitigate adverse environmental effects.
- 11.2 The EIA is an iterative process in which the assessment of environmental impacts is carried out in parallel with the Project design process.
- 11.3 We will consult on the PEIR, which will allow consultees to consider and provide feedback on preliminary EIA information.
- 11.4 The results of the EIA will be set out in the Environmental Statement ('ES') which will be submitted as part of the DCO application.
- 11.5 **Table 5** details the EIA process, including the stages of Scoping, PEIR and ES.

**Table 5: The EIA process**

<b>EIA Scoping</b>
<p>Our Scoping Report was published on 13 January 2025 and described the Project and the assessments of likely significant environmental effects. The Report is available to view on PINS' website: <a href="https://national-infrastructure-consenting.planninginspectorate.gov.uk/projects/EN0110014/documents">https://national-infrastructure-consenting.planninginspectorate.gov.uk/projects/EN0110014/documents</a></p> <p>In response to the Scoping Report, the Scoping Opinion was issued by PINS on 25 February 2025.</p>
<b>Preliminary Environmental Information Report ('PEIR')</b>
<p>The PEIR will provide a preliminary assessment of the likely significant environmental effects of the Project and contain details about consultation and engagement with key stakeholders.</p> <p>It will incorporate findings of the surveys and preliminary environmental assessments that have been carried out to date, including assessing cumulative impacts. This will enable consultees to develop an informed view of the likely significant environmental effects of the Project. In our Phase Two consultation, we will seek feedback on the findings of the PEIR.</p>
<b>Environment Statement ('ES')</b>
<p>The ES will advance the content of the PEIR and continue to incorporate the responses from the Phase Two consultation, stakeholder engagement and results of the surveys undertaken. It will also describe any changes to the Project and any mitigation measures. The ES will form part of the DCO application.</p>

## 12 Indicative Project timeline\*



## 13 Next steps and contact details

### 13.1 Consultation responses

13.2 Consultation responses must be submitted in writing or online by 23:59 on the closing date, unless agreed otherwise with us directly. Written feedback submitted via FREEPOST that is received after this date will be accepted up to two weeks after the deadline.

13.3 When a respondent submits feedback to the consultation (via the online feedback form or via email) an automated acknowledgement to confirm receipt will be issued.

13.4 Any person submitting feedback online who is concerned that they have not received acknowledgement of receipt is advised to contact the Project community relations team using the communication channels (see section **13.7**).

### 13.5 Information services

13.6 The Project community relations team is available to provide people with assistance in finding out about the Project and our Phase Two consultation.

13.7 You can get in touch with the Project community relations team using any of the communication channels listed below:

- Email: [info@eastpyesolar.co.uk](mailto:info@eastpyesolar.co.uk)
- Freephone: 0808 281 3175 (09:00-17:00 Monday to Friday excluding Bank Holidays)
- Post: FREEPOST EAST PYE SOLAR (no stamp required)

13.8 These communication channels will remain open throughout the pre-application stage. This is to enable engagement between consultees, communities and the Project team to continue outside of the consultation period. The Project website may also be updated with relevant information as it becomes available.

### 13.9 Ongoing engagement and potential further consultation

13.10 If, as a result of feedback, our proposals change to the extent we consider it necessary to undertake further targeted consultation, this will be undertaken, so far as relevant and proportionate, in accordance with the principles and methods set out in this SoCC.

## Appendix 1 Gateway Organisations and Community Groups

Category	Gateway organisations / group
Children and young people	<p>1st Long Stratton Scout Group                      Brownies and Rainbows Norfolk Girlguiding                      Girlguiding Norfolk County                      Ignite Youth Project                      Let's Talk About Loss                      Loddon Army Cadets                      MAP                      MTM Youth Services CIC                      Norfolk Army Cadets                      Norfolk Federation of Young Farmers Club                      Norfolk Youth Advisory Board / South Norfolk Youth Advisory Board                      Norfolk Youth Parliament</p> <p><b>Primary Schools and Pre-Schools</b>                      Aslacton Primary School                      Brooke VC Church of England Primary School                      Carleton Rode CEVA Primary School                      Hempnall Primary School                      Manor Field Infant and Nursery                      Preston Primary School                      Pulham Primary School                      Saxlingham Nethergate C of E VC Primary School                      Seething and Mundham Primary School                      St Mary's C of E Junior Academy                      Tivetshall Primary School                      Woodton Primary School</p> <p><b>Secondary and Sixth Form Attached Schools</b>                      Framingham Earl High School                      Harleston Sancroft Academy                      Hobart High School                      Langley School                      Long Stratton High School</p>
Lone parents	<p>Family Lives                      Gingerbread – support for single parents                      Norwich Mumbler                      Single Parent Action Network                      The Dad Network</p>
Older people	<p>Age UK Norfolk                      Friends of the Elderly                      Norfolk Older Peoples Partnerships                      Re-Engage</p>
People with disabilities	<p>About With Friends                      Alzheimer's Society – Norfolk and Suffolk</p>

Category	Gateway organisations / group
	Arts for Health – Creative Arts East Asperger East Anglia Autism Anglia Blossom Come Singing Equal Lives Hear for Norfolk Independence Matters MS Society (Norwich and District Group) Norfolk Deaf Children’s Society Royal Association for Deaf People (RAD) Stepping Stones The Benjamin Foundation Vision Norfolk West Norfolk Disability Information Service
People with learning difficulties	Affinity Trust ASD Helping Hands Mid MENCAP Norfolk Nansa Norfolk Learning Disability Partnership Norfolk SEN Network Norfolk SENDIASS Opening Doors (People First of Norfolk) SENSational families The Down’s Syndrome Association (DSA)
People visiting mental health support groups	Better Together Norfolk Just One Norfolk Kooth Matthew Project MensCraft Norwich and Waveney Mind Shout! Stand Easy Suffolk Mind You Are Not Alone (YANA)
Black and minority ethnic people	Boloh Helpline New Routes Norfolk African Community Association Norwich InterFaith Link The Bridge Plus The Zainab Project
Traveller community	Friends, Families and Travellers National Federation of Gypsy Liaison Groups One Voice 4 Travellers The Traveller Movement
The military	Bridge for Heroes Help for Heroes

Category	Gateway organisations / group
	Norfolk Army Cadets Op Courage Op Nova Outside the Wire PTSD Resolution SSAFA Norfolk The Royal British Legion – South Norfolk Veterans UK
Residents who work outside South Norfolk	East Norfolk Transport Users Association Federation of Small Businesses – East of England New Anglia Local Enterprise Partnership
People who work in South Norfolk but live elsewhere	GMB Norwich UNISON – Norfolk County
Lesbian, Gay, Bisexual, Transgender, Queer, Intersex, Asexual (LGBTQIA+) community	BLAH LGBTQ+ Youth Evolve Norfolk LGBT Meet Up Norfolk LGBT+ Project Norwich Mature Gay Community OASIS Norfolk Proud Canaries Proud Parents and Guardians Norwich The Proud Trust
Carers	Carers Matter Norfolk Caring Friends for Cancer Caring Together Charity Suffolk Family Carers The Carents Room Young Carers Matter Norfolk Your Priority Carers
Community interest groups	Active Norfolk British Horse Society – East of England Community Action Norfolk Disabled Ramblers Diss and District Cycling Club (CC) East Anglian CC East of England Local Government Association Gay Outdoor Club – Norfolk Norfolk and Suffolk Long Distance Walkers Association (LDWA) Norfolk Community Foundation Norfolk Local Access Forum Ramblers (Norfolk area)
Community interest groups – environmental	Butterfly Conservation Norfolk Climate Norfolk CPRE Norfolk Extinction Rebellion Waveney East Friends of Norfolk’s Environment Get Norfolk Greener

Category	Gateway organisations / group
	<p>Greening Wymondham  Loddon Young Farmers Club  Norfolk and Norwich Bat Group  Norfolk Biodiversity Information Service  Norfolk Biodiversity Partnership  Norfolk Birding  Norfolk Climate Change Partnership  Norfolk Coast Partnership  Norfolk East Norfolk Conservation Group  Norfolk Historic Environment Service  Norfolk Rivers Trust  Norfolk Wildlife Trust  Norfolk Young Farmers  Norwich Environmentalist Weekenders  Norwich Friends of the Earth  Norwich Fringe Group  Royal Norfolk Agricultural Association  The Broads Authority  The Papillion Project  Toad Watch  Wymondham Nature Group  Yare Valley Society  Young Activist Network – Environmental Campaign Group  Young Farmers and National Farmers Union (NFU)</p>
Community interest group – socio-economic	<p>Better Together Norfolk  Hope into Action Norwich  Norfolk Community Advice Network  Norfolk Strategic Housing Partnership  Nourishing Norfolk Network  Shelter Norwich  Solo Housing (East Anglia)  St Martins Housing Trust  The Edward Gostling Foundation  The Feed  The Magdalen Group  West Norfolk Befriending  WI Norfolk Federation  Your Own Place</p>

## **2 Letter to Norfolk County Council regarding SoCC consultation**

Dear [REDACTED] and [REDACTED],

**East Pye Solar: Section 47 Planning Act (2008) Consultation on Draft Statement of Community Consultation with Local Planning Authorities**

East Pye Solar Limited ('the Applicant') is developing plans for a utility scale solar and battery energy storage system (BESS) on land near Long Stratton in South Norfolk, England.

East Pye Solar (hereafter referred to by 'the Scheme') would comprise the installation of ground-mounted solar photovoltaic (PV) panels and a BESS with infrastructure that connects the Scheme to the existing 400kV line that runs north to south between Norwich Main and Bramford substations.

The Scheme is anticipated as being able to deliver up to 500 megawatts (MW) of electricity. Accordingly, it will be classified as a Nationally Significant Infrastructure Project (NSIP) and must comply with the Development Consent Order (DCO) regime as defined in the Planning Act 2008 ('2008 Act').

As part of our duty to consult the local community on the proposals for the Scheme, we have prepared a draft Statement of Community Consultation (SoCC). The draft SoCC outlines how communities can engage throughout the development process and explains how we intend to consult with communities in the vicinity of the Scheme.

Local authorities have an important role in the 2008 Act process. In accordance with Section 47(2) of the 2008 Act, the Applicant is required to consult with host local authorities on the draft SoCC, as set out under Section 43(1) of the 2008 Act. As the Applicant's proposed core consultation zone is within your council area, the Applicant is seeking views from your authority. This input from local authorities will be used to ensure that the people affected by the Development can take part in a thorough, accessible and effective consultation exercise.

We recognise that effective and appropriate consultation is of critical importance to this Scheme. The Applicant strongly welcomes your local knowledge and insight, as a local authority, to advise how best to conduct community consultation. Building on the initial feedback provided to the Applicant's early working draft of the SoCC, the Applicant invites you to comment on any aspect of the draft SoCC you consider appropriate.

Section 47(3) of the 2008 Act states that the Applicant must provide at least 28 days for comments; however, the Applicant has extended the timeframe of formal consultation on the draft SoCC by just over a week, due to the Easter bank holidays falling at the end of this period. This consultation period will commence on the day after the local authority receives the draft SoCC. The Applicant kindly request all comments to the draft SoCC to be received no later than **Tuesday 6 May 2025**.

Following receipt of all comments from the local authorities, the Applicant will seek to incorporate comments and suggestions and, as required in Section 47(5) of the 2008 Act, demonstrate the regard had to all comments received.

**Email:** [info@eastpyesolar.co.uk](mailto:info@eastpyesolar.co.uk)

**Freephone information line:** 0808 281 3175

**Write to:** FREEPOST EAST PYE SOLAR

**Website:** [www.eastpyesolar.co.uk](http://www.eastpyesolar.co.uk)



The Applicant intends to publicise the SoCC in June 2024. The SoCC will be publicised across the Scheme's core consultation zone and wider consultation are through local media, local notices and online via the dedicated website.

Shortly after publicising our SoCC, we intend to launch our Phase Two (statutory) consultation. This will be further publicised in line with the methods set out in the SoCC, including sending direct communications to an agreed consultation zone. This will notify local residents and businesses of the consultation period commencing, their opportunities to find out more information (including details of public information events), how to provide feedback, and the response deadline for comments to be submitted.

The Applicant invites all comments to the attached draft SoCC to be received no later than **Tuesday 6 May 2025** through the following contact details:

**Email:** [info@eastpyesolar.co.uk](mailto:info@eastpyesolar.co.uk)

**Postal address:** FREEPOST EAST PYE SOLAR

Please do not hesitate to get in contact with the team at any time using the details provided or via our Freephone information line: 0808 281 3175.

Kind regards,

The East Pye Solar Project Team

**Email:** [info@eastpyesolar.co.uk](mailto:info@eastpyesolar.co.uk)

**Freephone information line:** 0808 281 3175

**Write to:** FREEPOST EAST PYE SOLAR

**Website:** [www.eastpyesolar.co.uk](http://www.eastpyesolar.co.uk)

### **3 Letter to South Norfolk Council regarding SoCC Consultation**

Dear [REDACTED],

**East Pye Solar: Section 47 Planning Act (2008) Consultation on Draft Statement of Community Consultation with Local Planning Authorities**

East Pye Solar Limited ('the Applicant') is developing plans for a utility scale solar and battery energy storage system (BESS) on land near Long Stratton in South Norfolk, England.

East Pye Solar (hereafter referred to by 'the Scheme') would comprise the installation of ground-mounted solar photovoltaic (PV) panels and a BESS with infrastructure that connects the Scheme to the existing 400kV line that runs north to south between Norwich Main and Bramford substations.

The Scheme is anticipated as being able to deliver up to 500 megawatts (MW) of electricity. Accordingly, it will be classified as a Nationally Significant Infrastructure Project (NSIP) and must comply with the Development Consent Order (DCO) regime as defined in the Planning Act 2008 ('2008 Act').

As part of our duty to consult the local community on the proposals for the Scheme, we have prepared a draft Statement of Community Consultation (SoCC). The draft SoCC outlines how communities can engage throughout the development process and explains how we intend to consult with communities in the vicinity of the Scheme.

Local authorities have an important role in the 2008 Act process. In accordance with Section 47(2) of the 2008 Act, the Applicant is required to consult with host local authorities on the draft SoCC, as set out under Section 43(1) of the 2008 Act. As the Applicant's proposed core consultation zone is within your council area, the Applicant is seeking views from your authority. This input from local authorities will be used to ensure that the people affected by the Development can take part in a thorough, accessible and effective consultation exercise.

We recognise that effective and appropriate consultation is of critical importance to this Scheme. The Applicant strongly welcomes your local knowledge and insight, as a local authority, to advise how best to conduct community consultation. Building on the initial feedback provided to the Applicant's early working draft of the SoCC, the Applicant invites you to comment on any aspect of the draft SoCC you consider appropriate.

Section 47(3) of the 2008 Act states that the Applicant must provide at least 28 days for comments; however, the Applicant has extended the timeframe of formal consultation on the draft SoCC by just over a week, due to the Easter bank holidays falling at the end of this period. This consultation period will commence on the day after the local authority receives the draft SoCC. The Applicant kindly request all comments to the draft SoCC to be received no later than **Tuesday 6 May 2025**.

Following receipt of all comments from the local authorities, the Applicant will seek to incorporate comments and suggestions and, as required in Section 47(5) of the 2008 Act, demonstrate the regard had to all comments received.

**Email:** [info@eastpyesolar.co.uk](mailto:info@eastpyesolar.co.uk)

**Freephone information line:** 0808 281 3175

**Write to:** FREEPOST EAST PYE SOLAR

**Website:** [www.eastpyesolar.co.uk](http://www.eastpyesolar.co.uk)



The Applicant intends to publicise the SoCC in June 2024. The SoCC will be publicised across the Scheme's core consultation zone and wider consultation are through local media, local notices and online via the dedicated website.

Shortly after publicising our SoCC, we intend to launch our Phase Two (statutory) consultation. This will be further publicised in line with the methods set out in the SoCC, including sending direct communications to an agreed consultation zone. This will notify local residents and businesses of the consultation period commencing, their opportunities to find out more information (including details of public information events), how to provide feedback, and the response deadline for comments to be submitted.

The Applicant invites all comments to the attached draft SoCC to be received no later than **Tuesday 6 May 2025** through the following contact details:

**Email:** [info@eastpyesolar.co.uk](mailto:info@eastpyesolar.co.uk)

**Postal address:** FREEPOST EAST PYE SOLAR

Please do not hesitate to get in contact with the team at any time using the details provided or via our Freephone information line: 0808 281 3175.

Kind regards,

The East Pye Solar Project Team

**Email:** [info@eastpyesolar.co.uk](mailto:info@eastpyesolar.co.uk)

**Freephone information line:** 0808 281 3175

**Write to:** FREEPOST EAST PYE SOLAR

**Website:** [www.eastpyesolar.co.uk](http://www.eastpyesolar.co.uk)

## 4 Draft Statement of Community Consultation



# East Pye

S O L A R



**Draft Statement of Community Consultation**

For consultation with Norfolk County Council and South Norfolk Council

**April 2025**

## Table of Contents

1	Introduction .....	3
2	The Scheme.....	5
3	About us .....	7
4	The DCO consenting process .....	8
5	Our consultation process.....	10
6	Method of consultation.....	12
7	Who we will consult.....	14
8	When we will consult.....	18
9	What we will consult on .....	19
10	How we will consult.....	20
11	Environmental information .....	30
12	Indicative Scheme timeline* .....	31
13	Next steps and contact details .....	32
	Appendix 1 Gateway Organisations and Community Groups.....	33

# 1 Introduction

- 1.1 East Pye Solar Limited ('we' or 'the Applicant') is preparing this Statement of Community Consultation ('SoCC') in connection with its application for a Development Consent Order ('DCO') for a solar photovoltaic ('PV') electricity generating station and other associated development comprising a battery energy storage system ('BESS') substations, grid connection infrastructure and other infrastructure known as East Pye Solar ('the Scheme'), located on land near Long Stratton in South Norfolk.
- 1.2 The Scheme will deliver approximately 500 megawatts ('MW') of electricity, operating over 60 years. Clean electricity generated by the Scheme will be supplied to the National Grid at a new substation located southwest of the Scheme site. The Scheme will provide enough energy to power approximately 115,000 homes annually.
- 1.3 The Scheme would connect into the existing National Electricity Transmission System 400kV overhead line, which runs north to south between Norwich Main and Bramford substations.
- 1.4 As the Scheme's anticipated generation capacity exceeds 50 MW it is classified as a Nationally Significant Infrastructure Project ('NSIP'). This means the Scheme requires a DCO under the Planning Act 2008 ('the Act'), which will be determined by the Secretary of State ('SoS'). The Act requires promoters of NSIPs to carry out a formal stage of consultation, referred to as a 'Statutory Consultation', to take place over a minimum of 28 days.
- 1.5 We are intending for Phase Two (statutory) consultation to take place for just over six weeks, from Wednesday 18 June until Friday 01 August 2025 (a total of 45 days).
- 1.6 Prior to this statutory stage of consultation, and in accordance with Section 47 of the Act, consultation is being sought on a draft SoCC with the Local Planning Authorities ('LPAs'). These authorities are South Norfolk Council and Norfolk County Council.
- 1.7 An early working version of this draft SoCC was shared with South Norfolk Council and Norfolk County Council for initial comments. The LPAs were provided a two-week window between 4 March and 18 March 2025 to provide initial comments on the early working draft. Comments received from the local authorities have been considered and addressed in this latest version of the draft SoCC.
- 1.8 Comments received from the LPAs on the draft SoCC will be considered by the Applicant when preparing the final SoCC for publication.
- 1.9 The final SoCC will be publicised and made available for inspection by the public. It is anticipated that this will take place two weeks in advance of Phase Two (statutory) consultation, launching in Summer 2025. The final SoCC will be publicised in accordance with Section 47 of the Act, published on our website ([www.eastpyesolar.com](http://www.eastpyesolar.com)), with hard copies available on request, and for inspection at public venues as described in **section 10.39: Community Access Points**.

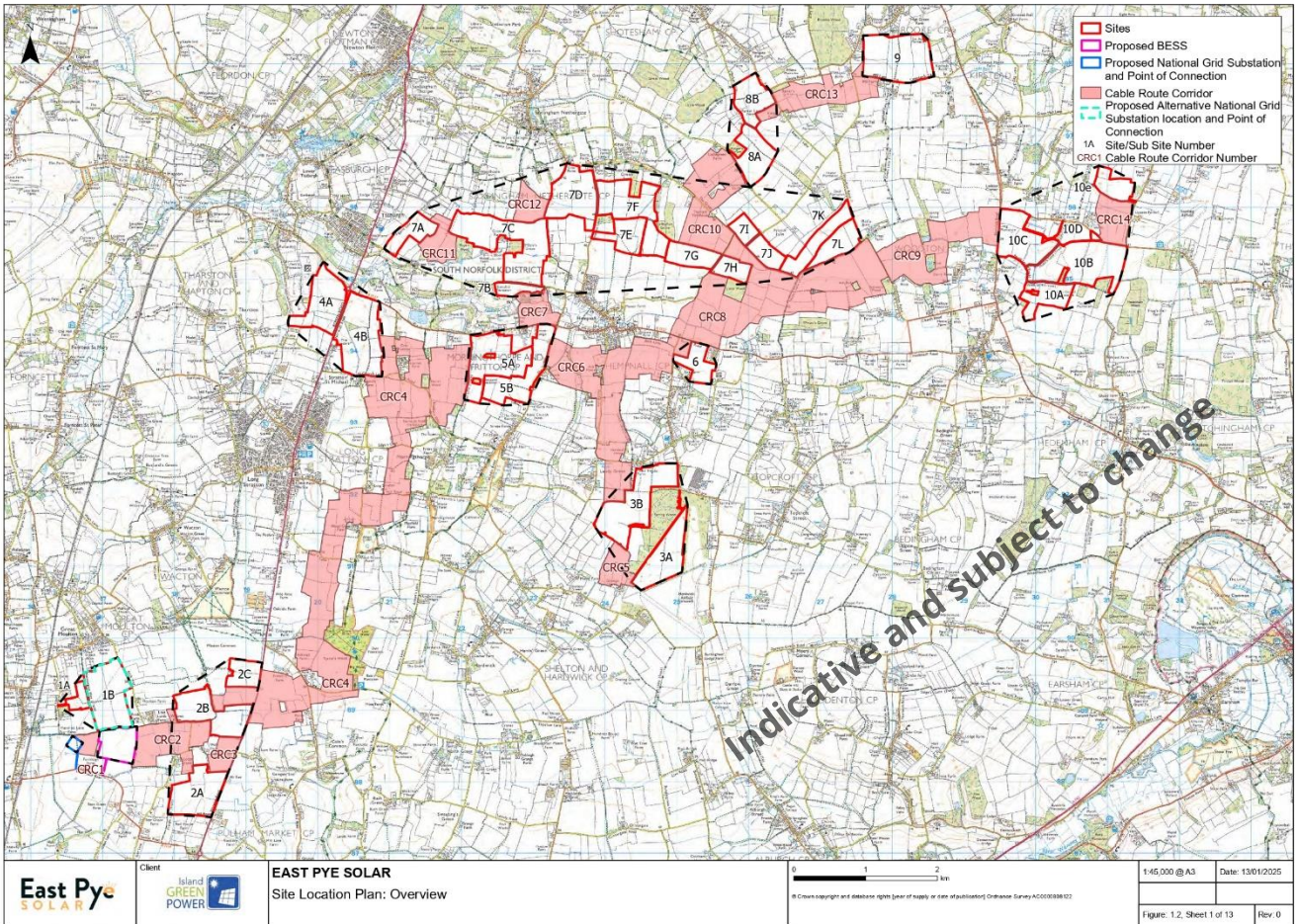
- 1.10 As required by Section 47(6) of the Act, we will publish a Section 47 notice in local newspapers for one week to advertise that the final SoCC has been published. It is anticipated that the notices will be published in the Eastern Daily Press and Diss Express on 4 June and 5 June 2025, respectively, according to publication days.
- 1.11 Phase Two (statutory) consultation will be undertaken in accordance with the methodology and commitments set out in the final SoCC as published.
- 1.12 Prior to this phase of statutory consultation, the Applicant has undertaken non-statutory consultation and engagement (Phase One consultation) to inform the emerging proposals for the Scheme and shape the ongoing design development. This included a six-week phase of public consultation, which was held from Wednesday 23 October to Friday 06 December 2024.
- 1.13 The aim of Phase One consultation was to introduce the Applicant, present the Applicant's early-stage proposals for the Scheme and give individuals an early opportunity to have their say and share their views and local knowledge.
- 1.14 The Applicant's Phase One consultation involved welcoming over 642 people to six in-person information events and one community webinar, receiving over 350 pieces of feedback via the feedback form, email and letters. A community consultation postcard was sent to over 7,000 households and businesses within the vicinity of the Scheme, and the Phase One consultation was advertised in the Eastern Daily Press and Diss Express to publicise the opportunities to provide feedback.
- 1.15 Experience from Phase One consultation – and ongoing engagement since its close – have also informed the proposed approach to Phase Two (statutory) consultation, as set out in this draft SoCC.

## 2 The Scheme

- 2.1 The Scheme spans a number of land parcels that will be developed for solar PV, associated development including BESS and substations, biodiversity enhancements and landscaping. Taken together the Scheme covers approximately 2,215 hectares ('ha') south of Norwich and north of Harleston.
- 2.2 The Scheme is grouped into Sites 1 – 10, the new National Grid Substation Site and the BESS Site. Sites 3 to 10 are concentrated to the east of Long Stratton, with an additional cluster of land parcels including Sites 1 and 2, the BESS Site and National Grid Substation Site located approximately 6.5km to the south-west of Great Moulton.
- 2.3 Currently, the Scheme includes a 'Cable Corridor Options Area'. This is the broad area within which the Applicant is seeking to arrange for the cable route connections between the solar PV panels and the new National Grid Substation Site where the Scheme will connect to the National Grid. Through further design, some minor refinements have taken place, and the corridor will be further refined ahead of submitting the DCO application.
- 2.4 The proposed Scheme area (referred to as the 'Site') is shown in **Figure 1** (to be updated for the final published SoCC). This map shows the current extent of land required for the Scheme.
- 2.5 The Scheme is anticipated as being able to deliver approximately 500 MW of renewable electricity to the National Grid and store up to 500 MWh (megawatt-hours) of energy in the BESS.
- 2.6 The Scheme has the potential to:
- Power the equivalent of 115,000 homes annually;
  - Contribute to climate targets and the decarbonisation of our electricity supply;
  - Boost Norfolk's emerging renewable energy industry, securing clean, affordable energy while providing investment and job opportunities in the county;
  - Enhance the natural environment by delivering a net gain in biodiversity; and
  - Provide community and local benefits for the surrounding area, with a commitment to work with the local community to identify and define community benefits.
- 2.7 The operational phase of the Scheme is expected to be 60 years. At the end of this period, a decommissioning plan will be enacted. This plan will require the removal of the solar PV panels, substation(s) and the BESS, and the restoration of the Site to its

original use. The new National Grid Substation will be retained as it will form part of the transmission network.

**Figure 1: Site Location Plan**



The above plan is correct as of 13 February 2025. Note: This Red Line Boundary will be updated to the one presented in the PEIR in the final, published SoCC.

### 3 About us

- 3.1 The DCO application for the Scheme is being prepared by East Pye Solar Limited.
- 3.2 East Pye Solar Limited is a 100 per cent subsidiary of IGP UK Schemes Limited, which is in turn a 100 per cent subsidiary of Island Green Power's UK group holding company, Island Green Power Group Limited (IGP).
- 3.3 Established in 2013, IGP has delivered almost 40 solar and battery storage projects worldwide totalling more than two gigawatts of clean, renewable energy. This includes 20 projects in the UK, including the recently-consented Cottam Solar and West Burton Solar NSIPs.
- 3.4 IGP specialises in the development of utility-scale solar projects and battery energy storage systems; overseeing the entire development process from start to finish, including sourcing land, securing grid connections and obtaining planning consents.
- 3.5 IGP's mission is to help the UK decarbonise and meet net zero goals, increasing solar energy generation and making more renewable energy possible while drastically reducing our carbon emissions.
- 3.6 IGP has appointed a professional project team to provide support and expertise throughout the Scheme development process for the project. Together, the project team has significant experience working across solar and DCO projects, and in developing plans that are sensitive to the needs of the local community and surrounding environment.

## 4 The DCO consenting process

- 4.1 The Scheme is classified as a NSIP because it comprises a solar energy generating station with a capacity of over 50MW.
- 4.2 The development consenting regime for an NSIP comes under the Act and associated guidance. This means that we need to submit a DCO application for the construction, operation, maintenance and decommissioning of the Scheme to the Planning Inspectorate ('PINS'), the body responsible for managing the examination process for NSIPs.
- 4.3 Should PINS accept the DCO application, they will appoint an Examining Authority to examine the DCO application. Anyone, including landowners and members of the public, will be able to submit a Relevant Representation to PINS and become an Interested Party. Any Interested Party is then able to participate in the Examination process, for example by attending hearings.
- 4.4 After the Examination period ends, the Examining Authority will make a recommendation to the SoS for Energy Security and Net Zero on whether to grant development consent. The SoS will make the final decision on the DCO application. **Table 1** provides an overview of the key stages of the DCO process.
- 4.5 Before submitting an application for development consent, the Applicant must carry out statutory consultation in accordance with the Act. This document – the SoCC – has been prepared in accordance with Section 47(1) of the Act and associated guidance. It explains how we intend to carry out Phase Two (statutory) consultation with the local community during the pre-application stage of the DCO process, sharing information about and inviting feedback on the Scheme.
- 4.6 We currently anticipate submitting our DCO application to PINS in Winter 2025. Subject to the DCO being granted, the earliest construction would start is 2028 (see **Section 12**).
- 4.7 More information about the stages of the DCO application process and how you can have your say can be found on the PINS website<sup>1</sup>.

**Table 1: DCO application process**

Stage	Description
1. Pre-application	We, as the Applicant, must consult the community and statutory consultees in compliance with the Act. To demonstrate this to PINS, in the DCO application we submit will include a Consultation Report setting out our method for consulting, the feedback received in response to the consultation, and how this has influenced our proposals.

<sup>1</sup> <https://www.gov.uk/guidance/nationally-significant-infrastructure-Schemes-the-stages-of-the-nsip-process-and-how-you-can-have-your-say>

Stage	Description
2. Acceptance	PINS, on behalf of the SoS, has 28 days to decide whether the application meets the required standards to proceed to the Examination. This includes consideration of whether our consultation has been adequate.
3. Pre-Examination	Further to the application being accepted, the Examining Authority will be appointed. Anyone can submit a Relevant Representation to PINS and become an Interested Party to provide comments at the Examination stage, speak at hearings and hear about events and decisions as well as the progress of the application. The Examining Authority will hold a preliminary meeting and set out the timetable for Examination.
4. Examination	The Examining Authority has up to six months to complete the Examination of the DCO application. This will involve a series of open floor / public hearings, compulsory acquisition hearings and topic specific hearings. This stage will also provide opportunities for Interested Parties to submit your comments in writing or orally at hearings.
5. Decision	A recommendation to the SoS will be issued by the Examining Authority within three months of the close of the Examination. The SoS then has a further three months to issue a decision on whether to grant development consent for the Scheme.

DRAFT

## 5 Our consultation process

- 5.1 The proposed approach is an iterative two-phase consultation process for the Scheme whereby feedback and information received in response to the consultation will inform the refinement of the Scheme design and options.
- 5.2 This includes:
- Phase One (non-statutory) consultation, which was held for over six weeks between 23 October and 6 December 2024 to:
    - Introduce the proposals and the Applicant;
    - Seek initial feedback on the Scheme to inform design refinements;
    - Identify local schemes or initiatives the Scheme could support or deliver; and
    - (i) Understand any opportunities to improve consultation methods ahead of Phase Two (statutory) consultation.
  - Phase Two (statutory) consultation, to be held for just over six weeks across Summer 2025. Consultation will seek to gather feedback on the latest design, proposed mitigation and information presented in the Preliminary Environmental Information Report ('PEIR'). See **Section 9: 'What we will consult on'** for the objectives of our Phase Two Consultation.
- 5.3 In carrying out Phase One consultation on the emerging proposals for the Scheme, the Applicant sought to help stakeholders and local communities understand the Scheme and how they can become involved at the pre-application stage.
- 5.4 Phase One consultation – such as attendance at public information events and the levels and format of feedback received – has also been considered by the Applicant when preparing their proposed approach to statutory consultation.
- 5.5 The professional project team has considered all feedback received during Phase One consultation in depth. This process has informed the proposals of the Scheme.
- 5.6 The Applicant published a Consultation Summary Report ('CSR') in March 2025. The purpose of the CSR is to present the feedback received at Phase One consultation and explain how this is being considered by the professional project team. The CSR is available to view our website via the Documents Library: <https://www.eastpyesolar.co.uk/documents>, and its availability was publicised through notifying key stakeholders and community members.
- 5.7 The Applicant is now preparing to undertake a statutory phase of consultation, described in this draft SoCC. This is expected to be the last opportunity for stakeholders to provide feedback before the Applicant submits its application for development consent, expected in Winter 2025.
- 5.8 Following this Phase Two (statutory) consultation, a Consultation Report will be submitted to PINS as part of the DCO application. This Consultation Report will

describe and evidence the consultation undertaken, the level of engagement with this consultation, and how consideration has been given to feedback received.

DRAFT

## 6 Method of consultation

- 6.1 We are committed to good practice in public consultation. Consultation for the Scheme is also informed by the latest government guidance for NSIPs, published in April 2024<sup>2</sup>.
- 6.2 We will employ a variety of consultation methods so that our consultation is appropriate and accessible. The methodology has had regard to the experience of the Phase One (non-statutory) consultation on the Scheme. The Statements of Community Involvement (SCI) adopted by the local authorities have also been reviewed and considered.
- 6.3 Consultation and communication methods will include:
- A dedicated freephone (0808 281 3175), email ([info@eastpyesolar.co.uk](mailto:info@eastpyesolar.co.uk)) and freepost address (FREEPOST East Pye Solar).
  - Project website ([www.eastpyesolar.co.uk](http://www.eastpyesolar.co.uk)).
  - Direct mail of consultation information to properties within the defined core consultation zone (see **Section 7.3**).
  - Information posters issued for display at public venues within the core consultation zone.
  - Use of local print and online media – editorial and advertising.
  - In-person information events at publicly accessible locations.
  - Virtual webinar format information event.
- 6.4 Provision of information in alternative languages and formats on request. For further details please see **Section 8 'How we will consult'**.
- 6.5 The information and materials we will use to inform the consultation will provide details of:
- The extent of the land proposed for the Scheme.
  - Preliminary environmental information, including results from ongoing assessments, descriptions of potential environmental effects arising from the Scheme, and proposals for how these could be managed and mitigated.
  - A proposed design, setting out:
    - Areas for solar PV, BESS and the new National Grid Substation, and associated infrastructure;

---

<sup>2</sup> <https://www.gov.uk/guidance/planning-act-2008-pre-application-stage-for-nationally-significant-infrastructure-schemes>

- Areas for mitigation and enhancement measures; and
- The Cable Corridor Options Area.

DRAFT

## 7 Who we will consult

7.1 We are seeking to engage with a range of individuals and groups in the local community.

7.2 In accordance with Section 47 of the Act, the SoCC must outline how we propose to consult with people living 'in the vicinity of the land' for the Scheme. This also encompasses those working within the vicinity of the land proposed for the Scheme.

### 7.3 Core consultation zone

7.4 To determine the core consultation zone, we considered where may be directly or indirectly impacted by the Scheme as a result of its construction, operation, maintenance, and decommissioning.

7.5 Having considered these impacts, we then determined an appropriate core consultation zone by extending a minimum distance of two kilometres ('km') from the site boundaries of the Solar PV Sites, the BESS and the new National Grid Substation, and 500 metres ('m') from the edge of the Cable Corridor Options Area.

7.6 The zone has been extended further, where proportionate, to include reasonable consideration of:

- Existing natural and human geographical boundaries, for example, railway lines, A-roads and/or motorways, for example the Great Eastern Main Line between Diss and Norwich, and the A416.
- Coverage of the parishes that host any of the proposed Solar Panel Areas, BESS and the new National Grid Substation as follows:
  - Brooke Parish Council;
  - Great Moulton Parish Council;
  - Hedenham Parish Meeting;
  - Hempnall Parish Council;
  - Howe Parish Meeting;
  - Kirstead Parish Meeting;
  - Long Stratton Town Council;
  - Morningthorpe and Fritton Parish Council;
  - Pulham Market Parish Council;
  - Saxlingham Nethergate Parish Council;
  - Seething Parish Council;
  - Shelton and Hardwick Parish Council;
  - Shotesham Parish Council;
  - Tasburgh Parish Council;
  - Tharston and Hapton Parish Council;
  - Tivetshall Parish Council;
  - Wacton Parish Council; and
  - Woodton Parish Council



## 7.9 **Consulting people beyond the core consultation zone**

7.10 It is recognised that people who live and work beyond the core consultation zone may have an interest in our proposals and wish to participate in the consultation.

7.11 To give these individuals and organisations the opportunity to participate in the Phase Two (statutory) consultation, we will raise awareness in the following ways:

- Directly notify any individual who has registered to receive information about the Scheme;
- Publish a Section 48 notice in the local and national press and London Gazette;
- Advertise the consultation in local media outlets reaching audiences beyond the core consultation zone;
- Publish consultation materials so they are available to view online; and
- Fulfil requests for copies of the consultation materials through the Scheme communication channels.

7.12 We will also engage those parties representing the interests of those communities which lie beyond the core consultation zone including:

- Members of Parliament representing the host constituencies:
  - Ben Goldsborough MP (South Norfolk); and
  - Adrian Ramsay MP (Waveney Valley).
- Norfolk County Council electoral division members (councillors).
- South Norfolk Council ward members (councillors).
- Parish councils that host or the Scheme boundary (see **section 7.6**).
- Gateway organisations and community groups (see **Appendix 1**).

7.13 To give these individuals and organisations the opportunity to participate in this second stage of consultation, we will raise awareness in the following ways:

- Directly notify all those who have registered their interest in the Scheme about consultation;
- Advertise the consultation in the Eastern Daily Press and Diss Express, reaching audiences beyond the core consultation zone; and
- Publish consultation materials online via the Scheme website and make them available in hard copy on request via our contact details.

7.14 **Consulting with under-represented or seldom heard groups**

- 7.15 The Applicant is committed to ensuring that the consultation process, and associated communications, reach as many parts of the community as practicable. We recognise that there are individuals, groups and communities for whom there may be certain barriers which could prevent them from fully participating in the consultation – or make them less likely to participate in or respond to traditional consultation techniques.
- 7.16 The Applicant has identified various ‘under-represented’ or ‘seldom-heard’ groups and individuals who may be less likely to engage with, or participate in, consultation. See **Appendix 1** for a list of the organisations and community groups we will contact.
- 7.17 The Applicant’s consultation methodology (see **Section 10**) has been developed to accommodate communicating as effectively as possible with these groups so they can have their say. Requests for specific consultation activity to cater for their members will be considered on a case-by-case basis. This will then be agreed and planned with the requesting organisations.

DRAFT

## 8 When we will consult

- 8.1 The Applicant will hold its Phase Two (statutory) consultation for a period of just over six weeks.
- 8.2 This is consistent with the approach taken to the non-statutory Phase One consultation and exceeds the statutory requirement of 28 days.
- 8.3 For purposes of this draft, the Applicant is working towards the dates of **Wednesday 18 June and Friday 01 August 2025** for the Phase Two (statutory) consultation period – a total of 45 days.
- 8.4 Please see **section 10.38** for our proposed venues for public information events. While the proposed consultation period overlaps with the start of the summer holiday period for schools, all information events will be held before school holidays begin on 22 July 2025.

DRAFT

## 9 What we will consult on

- 9.1 The aim of our Phase Two (statutory) consultation is to ensure that consultees have meaningful opportunities to understand and influence the Scheme proposals prior to the submission of a DCO application.
- 9.2 The Applicant's Phase Two (statutory) consultation will seek feedback on updated Scheme proposals that have had regard to feedback received to date.
- 9.3 It will include publishing the results of ongoing environmental surveys and preliminary assessments of likely significant effects, and studies that have been carried out to date. These will be presented in a PEIR and accompanying Non-Technical Summary ('NTS').
- 9.4 This will report on any potential likely significant environmental effects related to the Scheme and measures to mitigate these effects.
- 9.5 The extent of the land proposed for the Scheme will be presented in the consultation materials.
- 9.6 Our Phase Two (statutory) consultation will provide an opportunity to comment on:
- The design for the 10 Solar PV Sites in which the electricity generating station and BESS and new National Grid Substation would be contained;
  - The proposed Cable Corridor Options Area in which an underground cable would be installed to connect the Solar PV Sites to one another and provide an electrical connection into the National Grid;
  - The potential environmental effects of the Scheme in the PEIR which sets out the results of our preliminary environmental assessments and mitigation measures;
  - The timescales and next steps for the Scheme; and
  - Anything else you think we need to consider, such as community benefits, recreational routes, etc.

## 10 How we will consult

10.1 We will invite consultees to view, discuss and comment on our proposals.

10.2 We have identified a number of ways in which people can:

- Access information about our proposals and their potential effects;
- Review and comment on consultation documents at a time which is convenient to them; and
- Express their views regarding the Scheme by submitting feedback to the Phase Two consultation via easy to use and accessible methods.

### 10.3 **Project website**

10.4 A dedicated project website ([www.eastpyesolar.co.uk](http://www.eastpyesolar.co.uk)) was launched in September 2024 to host information about the Scheme.

10.5 All of the consultation materials will be available to view and download, free of charge, on the project website via the Documents page: <https://www.eastpyesolar.co.uk/documents>

10.6 It will be possible to submit a response to the consultation via the website using a dedicated online feedback form during the consultation period.

10.7 The website will also allow people to register their contact details with the Scheme so they can receive future updates during and after the consultation period.

### 10.8 **Direct communications**

10.9 Direct communications – via a leaflet or postcard – will be issued to all properties within the core consultation zone (see **Figure 2**) and to any other parties who registered to be kept informed about the Scheme by post.

10.10 The written communication will notify local residents and businesses of the consultation period, opportunities to find out more information (including details of public information events), how to provide feedback, and the response deadline for comments to be submitted.

10.11 The direct written communication will be printed and posted prior to the Phase Two consultation period commencing.

10.12 Identified key stakeholders and those that have registered to be kept informed with the Scheme will also be notified on the day of the Phase Two consultation launch via email of the consultation period, opportunities to find out more information, how to provide feedback and the response deadline for comments to be submitted.

### 10.13 **Phase Two Consultation Information Booklet**

10.14 A Phase Two Consultation Information Booklet will be published on the project website at the start of the Phase Two (statutory) consultation. This will provide a summary of the Scheme, what we are consulting on, details of how people can take part in the consultation, how feedback will be considered and used to inform the Scheme, and how we will provide information on the outcome of the consultation.

10.15 Printed copies of this document will be available to take away at in-person information events and Community Access Points (CAPs). Copies will also be made available on request in digital or hard copy format, free of charge.

### 10.16 **Feedback Form**

10.17 A feedback form will be made available to enable people to provide feedback on the proposals. Specific questions will be included on particular areas on which we are seeking comment, however, no questions will be mandatory, and all comments made on the form will be accepted.

10.18 An online version of the feedback form will be hosted on the project website so that feedback can be provided electronically.

10.19 Hard copy forms will be available at in-person public information events and at CAPs. An online PDF version of the feedback form will also be available to download from the Scheme website. Copies of the feedback form will also be made available on request in digital or hard copy format, free of charge.

10.20 While the feedback form is intended to encourage and support the provision of feedback, we recognise some people may prefer to provide written comments outside set questions. All written comments will be accepted and can be submitted during the Phase Two consultation period by post to FREEPOST EAST PYE SOLAR (no stamp or further address details required) or by email to [info@eastpyesolar.co.uk](mailto:info@eastpyesolar.co.uk)

### 10.21 **Technical documents, maps and plans**

10.22 The PEIR will be published at the start of the Phase Two (statutory) consultation period. This document will provide details of the Scheme and preliminary environmental assessments undertaken to date.

10.23 The PEIR will include dedicated chapters on each topic considered to give rise to likely significant environmental effects associated with the Scheme. These chapters will be supported by appendices and figures. A NTS of the PEIR will also be available.

10.24 The full PEIR will be available to view and download, free of charge, on the project website and will be available to view in printed format at public information events.

10.25 Requests for a printed hard copy of the PEIR will be reviewed on a case-by-case basis. To cover printing and postage costs, a charge may apply, which will be calculated

based on cost per individual volume requested. This charge will be included in the final SoCC, upon finalisation of all technical documents.

#### 10.26 **Meetings and briefings**

10.27 Meetings and briefing sessions may be arranged with local parish councils, elected members and key local stakeholder groups prior, during and following Phase Two (statutory) consultation.

#### 10.28 **Information events**

10.29 We intend to hold at least six in-person public information events during Phase Two (statutory) consultation.

10.30 We intend to schedule these events towards the start of the consultation period, with a minimum of three weeks' notice between events being published in the final SoCC and the first event. This is to ensure all events are held prior to the start of the school summer holidays, in line with Norfolk County Council's term times<sup>3</sup>. It also allows time for the events to be effectively publicised and for consultees to access and consider consultation information before attending, while allowing time after events for attendees to prepare and submit feedback ahead of the response deadline.

10.31 Events will be held across different days of the week and cover a range of times to accommodate different working hours and care schedules to promote accessibility and attendance. This will include holding an event on a Saturday and events running into the evening.

10.32 The proposed programme of events anticipated as being held are set out in **Table 2**.

10.33 At events, attendees will be able to find out information about the Scheme and what we are consulting on. Members of the professional project team will be present to discuss the proposals and answer questions.

10.34 In-person information events are proposed to be held at venues within the core consultation zone that are publicly accessible and accommodate the needs of individuals with limited mobility. Information available at these events will include:

- The final SoCC (for reference only).
- Event display panels and boards (for viewing only).
- Maps of the Scheme (for viewing only).
- Phase Two Consultation Information Booklet (for reference and to take away).
- Feedback Form (for reference and to take away).

---

<sup>3</sup> <https://www.norfolk.gov.uk/article/38213/Term-dates-and-school-holidays-2024-2025>

- The PEIR and accompanying NTS (for reference only).
- 10.35 The Applicant will also hold one online information event (webinar) via Zoom, the date and time of which will be publicised along with details of the in-person events.
- 10.36 The webinar will be held for anyone to join via telephone or the internet, with participants needing to register before attending. The format of this webinar will involve the presentation of information consistent with that made available at in person events (i.e. display panels) by representatives from the professional project team, followed by a moderated questions and answer session. Participants will be invited to submit questions during the webinar. A recorded version of the webinar will be made available upon request after the session.
- 10.37 Based on the indicative consultation period set out in **Section 8.3**, information events will be held across a three-week window between **Monday 30 June and Monday 21 July 2025**.
- 10.38 A provisional information event schedule is set out in **Table 2** below. Please note that these details are subject to change and will continue to be informed by venue availability and confirmation that they meet our health and safety and capacity requirements.

**Table 2: Proposed schedule for Phase Two (statutory) Consultation information events**

<b>Date and time</b>	<b>Location</b>
Wednesday 2 July 2025, 14:30 – 19:30	<b>Aslacton and Great Moulton Coronation Hall</b> Carr Lane, Great Moulton, Norwich, NR15 2LA
Thursday 3 July 2025, 14:30 – 19:30	<b>Saxlingham Nethergate Village Hall</b> Steward Close, Saxlingham Nethergate, Norwich, NR15 1AJ
Thursday 10 July 2025, 14:00 – 19:00	<b>Long Stratton Village Hall</b> Ipswich Road, Long Stratton, Norwich, NR15 2TA
Friday 11 July 2025, 14:30 – 19:30	<b>Brooke Village Hall</b> Norwich Road, Brooke, Norwich, NR15 1AB
Saturday 12 July 2025, 11:00 – 15:00	<b>Hempnall Village Hall</b> Bungay Road, Hempnall, Norwich, NR15 2NG
Wednesday 16 July 2025, 14:30 – 19:00	<b>Woodton Village Hall</b> Hempnall Road, Woodton, Bungay, NR35 2NG
Monday 21 July 2025, 18:30 – 20:00	<b>Community Webinar</b> via Zoom (a link will be available on the project website for stakeholders to register their attendance)

### 10.39 **Community Access Points**

10.40 CAPs are deposit locations where we will make hard copies of the SoCC and relevant Phase Two consultation materials available.

10.41 **Table 3** below indicates where the relevant Phase Two (statutory) consultation materials will be made available.

10.42 The materials include:

- Copies of this SoCC for reference only. This will be available at CAPs before the Phase Two (statutory) consultation commences;
- Copies of the Phase Two Consultation Information Booklet for reference and for taking away;
- Copies of the Feedback Form for reference and taking away; and
- A copy of the PEIR Non-Technical Summary for reference only.

10.43 A copy of the PEIR will be available at Long Stratton Library for reference only.

10.44 All CAPs host computers with internet access to enable access to the full PEIR via the Scheme website. While access to computers at the libraries is free, a membership for the library may be required.

**Table 3: Community Access Points**

Location	Current Opening Times*
<b>Long Stratton Library</b> The Street, Long Stratton, NR15 2XJ	Monday: 08:00 – 11:00 (Open Library access) <sup>4</sup> 11:00 – 19:00 (staffed hours) Tuesday, Thursday: 08:00 – 11:00 (Open Library access) 13:00 – 19:00 (staffed hours) Wednesday, Friday: 08:00 – 19:00 (Open Library access) Saturday: 10:00 – 11:00 (Open Library access) 11:00 – 16:00 (staffed hours) Sunday: 10:00 – 16:00 (Open Library access)
<b>Loddon Library</b> 31 Church Plain, Loddon, NR14 6EX	Monday, Thursday, Friday: 08:00 – 10:00 (Open Library access) 10:00 – 19:00 (Staffed hours) Tuesday, Wednesday: 08:00 – 19:00 (Open Library access)

<sup>4</sup> Open Library gives you access to your local library, its books, computers and spaces when the building is unstaffed. Further information about Open Library access: <https://www.norfolk.gov.uk/openlibrary>

Location	Current Opening Times*
	Saturday: 08:00 – 13:00 (Open Library access) 13:00 – 16:00 (Staffed hours)  Sunday: 10:00 – 16:00 (Open Library access)
<b>Bungay Community Library</b>  Wharton Street, Bungay, NR35 1EL	Monday: 09:00 – 14:30  Tuesday to Saturday: 09:00 – 17:00  Sunday: Closed
<b>Poringland Library</b>  Overtons Way, Poringland, Norwich, NR14 7WB	Monday, Friday: 08:00 – 14:00 (Open Library access) 14:00 – 19:00 (Staffed hours)  Tuesday, Wednesday: 08:00 – 10:00 (Open Library access) (10:00 – 19:00) (Staffed hours)  Thursday: 08:00 – 19:00 (Open Library access)  Saturday: 08:00 – 10:00 (Open Library access) 10:00 – 16:00 (Staffed hours)  Sunday: 10:00 – 16:00 (Open Library access)

10.45 Opening times and accessibility may vary, so it is advised to check with venues directly for up-to-date information.

10.46 **Availability of materials**

10.47 **Table 4** below summarises the availability of consultation materials during the Phase Two (statutory) consultation period.

**Table 4: Availability of consultation materials**

Document	In-person information events	Scheme website*	Hard copy on request	Direct mailed	Community Access Points
<b>Preliminary Environmental Information Report (PEIR)</b>	Yes	Yes	Yes (charges apply)	No	Yes (only at Long Stratton Library)
<b>PEIR Non-Technical Summary (NTS)</b>	Yes	Yes	Yes (charges apply)	No	Yes (at all libraries, for reference only)

Document	In-person information events	Scheme website*	Hard copy on request	Direct mailed	Community Access Points
Community Consultation Postcard/Leaflet	No	Yes	Yes	Yes	No
Phase Two Consultation Information Booklet	Yes	Yes	Yes	No	Yes (to take away)
Feedback Form	Yes	Yes	Yes	No	Yes (to takeaway)
Event Displays and Maps	Yes	Yes	No	No	No
Statement of Community Consultation (SoCC)	Yes	Yes	Yes	No	Yes (for reference only)

\*Documents and materials will be available as PDFs to view and download free of charge from the 'Documents' section of the Scheme website: <https://www.eastpyesolar.co.uk/documents>

#### 10.48 **Providing feedback**

10.49 The Scheme's dedicated communication channels will remain open throughout the pre-application stage. Outside the Phase Two (statutory) consultation period, stakeholders may speak to a member of the Scheme's community relations team.

10.50 During the consultation period, written feedback can be provided by:

- Submitting an online feedback form through the project website
- Completing a PDF version of the hard copy feedback form and submitting via email: [info@eastpyesolar.co.uk](mailto:info@eastpyesolar.co.uk)
- Completing a printed copy of the feedback form and submitting it at an in-person information event or returning it to FREEPOST EAST PYE SOLAR (no stamp required)
- Sending an email to: [info@eastpyesolar.co.uk](mailto:info@eastpyesolar.co.uk)
- Providing comments in writing and posting them to FREEPOST EAST PYE SOLAR (no stamp required)

- 10.51 Feedback must be received by 23:59 on the closing date. To account for postage delays, feedback received after this date via Freepost may be considered.
- 10.52 Questions and requests for information can be made using the communication channels above and by calling the freephone line 0808 281 3175 (open 09:00 – 17:00 Monday to Friday, with a voice message service operating outside of these hours so a callback can be made if requested). Feedback via telephone is not being accepted, except by prior arrangement.
- 10.53 **Section 47 Notice**
- 10.54 Alongside the publication of the final SoCC on the project website, the Phase Two (statutory) consultation will be publicised through Section 47 Notices in local newspapers in the vicinity of the Scheme.
- 10.55 A list of newspaper outlets and proposed dates when the Section 47 Notice will appear are set out in **Table 5**.

**Table 5: Proposed S47 Notices Schedule**

Newspaper outlet	Publication date
Eastern Daily Press	4 June 2025
Diss Express	6 June 2025

10.56 **Section 48 Notice**

- 10.57 As required by Section 48 of the Act, we will publish a Section 48 Notice advertising our intention to submit a DCO application and the Phase Two (statutory) consultation in local newspapers in the vicinity of the Scheme for two consecutive weeks, and a national newspaper and the London Gazette for one week.
- 10.58 A list of the newspaper outlets and proposed dates when the Section 48 Notice will appear are set out in **Table 6**.

**Table 6: Proposed S48 Notices Schedule**

Newspaper outlet	1 <sup>st</sup> publication date	2 <sup>nd</sup> publication date
Diss Express	6 June 2025	13 June 2025
Eastern Daily Press	11 June 2025	18 June 2025
The Guardian	16 June 2025	N/A
London Gazette	18 June 2025	N/A

10.59 **Media, advertising and publicity**

10.60 To raise awareness about the Scheme and consultation within and beyond the core consultation zone, we will issue a media release to local and trade press at the start of the consultation to provide an overview of the Scheme, why we are consulting and how people can access information about the Scheme, including dates of information events (online and in-person) and the deadline for receipt of responses.

10.61 Subsequent media releases will be issued during the consultation period to remind the public of consultation activities, and at the close of consultation.

10.62 In addition to publishing a formal Section 48 Notice in local and national newspapers, we will place advertisements in local media to publicise the consultation and information events taking place (online and in-person).

10.63 A list of local and regional media outlets to whom media releases will be issued, and at least one round of advertising place with, is set out in **Table 7**.

**Table 7: Media outlets**

<b>Media releases will be issued to:</b>	
BBC Look East	Fakenham and Wells Times
BBC Radio Norfolk	ITV Anglia
Beccles and Bungay Journal	Norfolk News
Diss Express	Norwich Evening News
Diss Mercury	South Norfolk Life
East Anglia Bylines	Village People (South Norfolk)
East Anglian Daily Times	Wymondham & Attleborough Mercury
Eastern Daily Press	Your Norfolk
<b>Advertisements could be placed in:</b>	
Diss Express	Village People
Eastern Daily Press	The Sexton's Wheel
South Norfolk Link	

10.64 Posters publicising the consultation will be issued to information event venues, and the clerks of parish councils for display on local parish notice boards. They will also be made available to other community venues and local information points within the core consultation zone. The posters will be displayed at the discretion of the community venue or local information point.

10.65 **Changes to consultation activities**

10.66 Should any change to our consultation activities be required due to circumstances outside our control, details will be publicised in line with the methods set out in this SoCC to the extent it is reasonable and proportionate to do so.

10.67 **Coordination with other NSIP developers**

10.68 The Applicant recognises that there are a number of other NSIPs in the South Norfolk District and Norfolk County. Ahead of the Phase Two (statutory) consultation, the Applicant will seek to engage with third-party developers to determine the timing of any defined consultation periods and activities, including when in-person events will be taking place. Where practicable, the Applicant will try to ensure that in-person events do not take place on the same days to ensure all stakeholders can take part in the consultations for all projects.

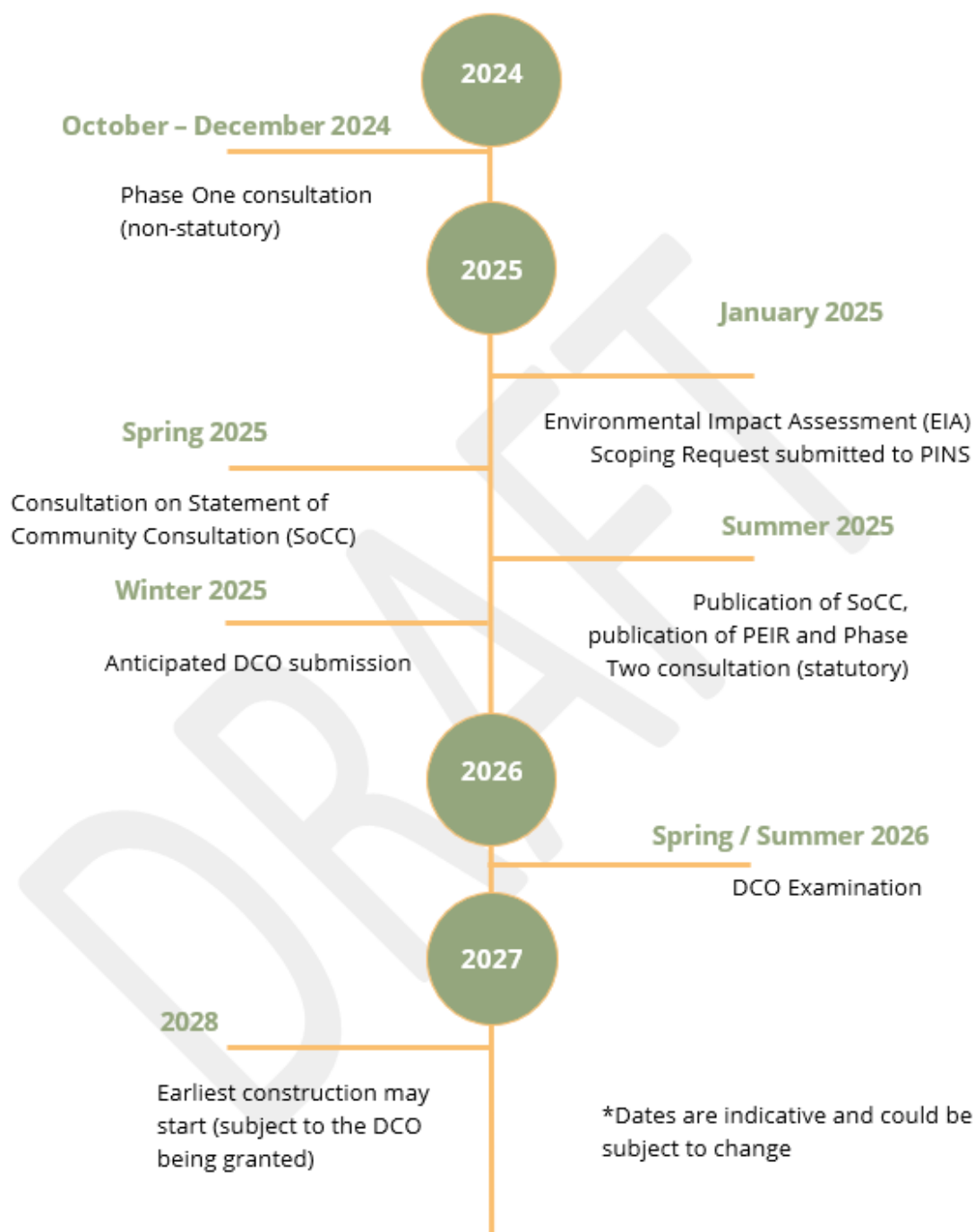
## 11 Environmental information

- 11.1 East Pye Solar is classified as an Environmental Impact Assessment ('EIA') development under the Infrastructure Planning (Environmental Impact Assessment) Regulations 2017. The DCO application will therefore require an EIA to be carried out to identify and evaluate the likely significant effects of the Scheme on the environment. The EIA will identify measures to mitigate adverse environmental effects.
- 11.2 The EIA is an iterative process in which the assessment of environmental impacts is carried out in parallel with the Scheme design process.
- 11.3 We will consult on the PEIR, which will allow consultees to consider and provide feedback on preliminary EIA information.
- 11.4 The results of the EIA will be set out in the Environmental Statement ('ES') which will be submitted as part of the DCO application.
- 11.5 **Table 8** details the EIA process, including the stages of Scoping, PEIR and ES.

**Table 8: The EIA process**

<b>EIA Scoping</b>
<p>Our Scoping Report was published on 13 January 2025 and described the Scheme and the assessments of likely significant environmental effects. The Report is available to view on PINS' website: <a href="https://national-infrastructure-consenting.planninginspectorate.gov.uk/Schemes/EN0110014/documents">https://national-infrastructure-consenting.planninginspectorate.gov.uk/Schemes/EN0110014/documents</a></p> <p>In response to the Scoping Report, the Scoping Opinion was issued by PINS on 25 February 2025.</p>
<b>Preliminary Environmental Information Report ('PEIR')</b>
<p>The PEIR will provide a preliminary assessment of the likely significant environmental effects of the Scheme and contain details about consultation and engagement with key stakeholders.</p> <p>It will incorporate findings of the surveys and preliminary environmental assessments that have been carried out to date, including assessing cumulative impacts. This will enable consultees to develop an informed view of the likely significant environmental effects of the Scheme. In our Phase Two consultation, we will seek feedback on the findings of the PEIR.</p>
<b>Environment Statement ('ES')</b>
<p>The ES will advance the content of the PEIR and continue to incorporate the responses from the Phase Two consultation, stakeholder engagement and results of the surveys undertaken. It will also describe any changes to the Scheme and any mitigation measures. The ES will form part of the DCO application.</p>

## 12 Indicative Scheme timeline\*



## 13 Next steps and contact details

### 13.1 Consultation responses

13.2 Consultation responses must be submitted in writing or online by 23:59 on the closing date, unless agreed otherwise with us directly. To account for postage delays, feedback received after this date via Freepost may be considered.

13.3 When a respondent submits feedback to the consultation (via the online feedback form or via email) an automated acknowledgement to confirm receipt will be issued.

13.4 Any person submitting feedback online who is concerned that they have not received acknowledgement of receipt is advised to contact the Scheme's community relations team using the communication channels (see section **13.7**).

### 13.5 Information services

13.6 The Scheme's community relations team is available to provide people with assistance in finding out about the Scheme and our Phase Two (statutory) consultation.

13.7 You can get in touch with the Scheme's community relations team using any of the communication channels listed below:

- Email: [info@eastpyesolar.co.uk](mailto:info@eastpyesolar.co.uk)
- Freephone: 0808 281 3175 (09:00-17:00 Monday to Friday excluding Bank Holidays, with a voicemail service to take messages outside of these hours)
- Post: FREEPOST EAST PYE SOLAR (no stamp required)

13.8 These communication channels will remain open throughout the pre-application stage. This is to enable engagement between consultees, communities and the Scheme team to continue outside of the consultation period. The project website may also be updated with relevant information as it becomes available.

### 13.9 Ongoing engagement and potential further consultation

13.10 If, as a result of feedback, our proposals change to the extent we consider it necessary to undertake further targeted consultation, this will be undertaken, so far as relevant and proportionate, in accordance with the principles and methods set out in this SoCC.

## Appendix 1 Gateway Organisations and Community Groups

Category	Gateway organisations / group
Children and young people	<p>1st Long Stratton Scout Group                      Brownies and Rainbows Norfolk Girlguiding                      Girlguiding Norfolk County                      Ignite Youth Scheme                      Let's Talk About Loss                      Loddon Army Cadets                      MAP                      MTM Youth Services CIC                      Norfolk Army Cadets                      Norfolk Federation of Young Farmers Club                      Norfolk Youth Advisory Board / South Norfolk Youth Advisory Board                      Norfolk Youth Parliament</p> <p><b>Primary Schools and Pre-Schools</b>                      Aslacton Primary School                      Brooke VC Church of England Primary School                      Carleton Rode CEVA Primary School                      Hempnall Primary School                      Manor Field Infant and Nursery                      Preston Primary School                      Pulham Primary School                      Saxlingham Nethergate C of E VC Primary School                      Seething and Mundham Primary School                      St Mary's C of E Junior Academy                      Tivetshall Primary School                      Woodton Primary School</p> <p><b>Secondary and Sixth Form Attached Schools</b>                      Framingham Earl High School                      Harleston Sancroft Academy                      Hobart High School                      Langley School                      Long Stratton High School</p>
Lone parents	Family Lives Gingerbread - support for single parents
Older people	Age UK Norfolk Friends of the Elderly Norfolk Older Peoples Partnerships Re-Engage
People with disabilities	About With Friends Alzheimer's Society - Norfolk and Suffolk Arts for Health - Creative Arts East Asperger East Anglia Autism Anglia

<b>Category</b>	<b>Gateway organisations / group</b>
	<p>Come Singing            Equal Lives            Hear for Norfolk            Independence Matters            MS Society (Norwich and District Group)            Norfolk Deaf Children's Society            Royal Association for Deaf People (RAD)            Stepping Stones            The Benjamin Foundation            Vision Norfolk            West Norfolk Disability Information Service</p>
People with learning difficulties	<p>Affinity Trust            ASD Helping Hands            Mid MENCAP Norfolk            Nansa            Norfolk Learning Disability Partnership            Norfolk SEN Network            Norfolk SENDIASS            Opening Doors (People First of Norfolk)            SENSational families            The Down's Syndrome Association (DSA)</p>
People visiting mental health support groups	<p>Better Together Norfolk            Matthew Scheme            MensCraft            Norwich and Waveney Mind            Stand Easy            Suffolk Mind            You Are Not Alone (YANA)</p>
Black and minority ethnic people	<p>Boloh Helpline            New Routes            Norfolk African Community Association            Norwich InterFaith Link            The Bridge Plus            The Zainab Scheme</p>
Traveller community	<p>Friends, Families and Travellers            National Federation of Gypsy Liaison Groups            One Voice 4 Travellers            The Traveller Movement</p>
The military	<p>Bridge for Heroes            Help for Heroes            Norfolk Army Cadets            Op Courage            Op Nova            Outside the Wire            PTSD Resolution            SSAFA Norfolk            The Royal British Legion – South Norfolk</p>

<b>Category</b>	<b>Gateway organisations / group</b>
	Veterans UK
Residents who work outside South Norfolk	East Norfolk Transport Users Association Federation of Small Businesses – East of England
People who work in South Norfolk but live elsewhere	GMB Norwich
Lesbian, Gay, Bisexual, Transgender, Queer, Intersex, Asexual (LGBTQIA+) community	BLAH LGBTQ+ Youth Evolve Norfolk LGBT+ Scheme OASIS Norfolk Proud Canaries The Proud Trust
Carers	Carers Matter Norfolk Caring Friends for Cancer Caring Together Charity Suffolk Family Carers The Carers Room Young Carers Matter Norfolk Your Priority Carers
Community interest groups	Active Norfolk British Horse Society – East of England Community Action Norfolk Disabled Ramblers Diss and District Cycling Club (CC) East Anglian CC East of England Local Government Association Gay Outdoor Club – Norfolk Norfolk and Suffolk Long Distance Walkers Association (LDWA) Norfolk Community Foundation Norfolk Local Access Forum Ramblers (Norfolk area)
Community interest groups – environmental	Butterfly Conservation Norfolk Climate Norfolk CPRE Norfolk Extinction Rebellion Waveney East Friends of Norfolk's Environment Get Norfolk Greener Greening Wymondham Loddon Young Farmers Club Norfolk and Norwich Bat Group Norfolk Biodiversity Information Service Norfolk Biodiversity Partnership Norfolk Birding Norfolk Climate Change Partnership Norfolk Coast Partnership Norfolk East Norfolk Conservation Group Norfolk Historic Environment Service

Category	Gateway organisations / group
	<p>Norfolk Rivers Trust  Norfolk Wildlife Trust  Norfolk Young Farmers  Norwich Environmentalist Weekenders  Norwich Friends of the Earth  Norwich Fringe Group  Royal Norfolk Agricultural Association  The Broads Authority  The Papillion Scheme  Toad Watch  Wymondham Nature Group  Yare Valley Society  Young Activist Network – Environmental Campaign Group  Young Farmers and National Farmers Union (NFU)</p>
Community interest group – socio-economic	<p>Better Together Norfolk  Hope into Action Norwich  Norfolk Community Advice Network  Norfolk Strategic Housing Partnership  Nourishing Norfolk Network  Shelter Norwich  Solo Housing (East Anglia)  St Martins Housing Trust  The Edward Gostling Foundation  The Feed  The Magdalen Group  West Norfolk Befriending  WI Norfolk Federation  Your Own Place</p>

## **5 Published Statement of Community Consultation**

# Statement of Community Consultation

**June 2025**



# Contents

1. Introduction	<b>4</b>
2. About us	<b>6</b>
3. The Scheme	<b>7</b>
4. The DCO consenting process	<b>10</b>
5. Our public consultation process	<b>12</b>
6. Method of consultation	<b>13</b>
7. Who we will consult	<b>14</b>
8. When we will consult	<b>17</b>
9. How we will consult	<b>18</b>
10. Environmental information	<b>25</b>
11. Indicative Scheme timeline	<b>26</b>
12. Next steps and contact details	<b>27</b>

## List of tables

Table 1: DCO application process

Table 2: Programme for Phase Two consultation information events

Table 3: Community Access Points

Table 4: Availability of consultation materials

Table 5: S48 Notices schedule

Table 6: Media outlets

Table 7: The EIA process

## List of figures

Figure 1: Scheme location map and site boundary

Figure 2: Components of a typical solar project

Figure 3: Core consultation zone

## Appendices

Appendix 1: Gateway Organisations and Community Groups

# 1. Introduction

- 1.1. East Pye Solar Limited ('we' or 'the Applicant') is publishing this Statement of Community Consultation ('SoCC') in connection with its application for a Development Consent Order ('DCO') for a solar photovoltaic ('PV') electricity generating station and other associated development comprising a battery energy storage system ('BESS') substations, a new National Grid substation and associated grid connection infrastructure, and other infrastructure known as East Pye Solar ('the Scheme'), located on land near Long Stratton in South Norfolk.
- 1.2. The Scheme will deliver approximately 500 megawatts ('MW') of electricity, operating for up to 60 years. Clean electricity generated by the Scheme will be supplied to the National Grid at a new substation located in the southwestern part of the Scheme site. The Scheme will provide enough energy to power approximately 115,000 homes annually.
- 1.3. The Scheme, via the new National Grid substation, would connect to the existing National Electricity Transmission System 400kV overhead line, which runs north to south between Norwich Main and Bramford substations.
- 1.4. As the Scheme's anticipated generation capacity exceeds 50 MW it is classified as a Nationally Significant Infrastructure Project ('NSIP'). This means the Scheme requires a Development Consent Order (DCO) under the Planning Act 2008 ('PA2008'), which will be determined by the Secretary of State (SoS). The PA2008 requires promoters of NSIPs to carry out statutory consultation, referred to as a 'Phase Two consultation', to take place over a minimum of 28 days.
- 1.5. An application for a DCO for the construction, operation and maintenance and decommissioning of the Scheme will be submitted to the Planning Inspectorate ('PINS'), who will carry out an Examination of the DCO application. PINS will then make a recommendation to the SoS for Energy Security and Net Zero who will decide whether to grant the DCO for the Scheme.
- 1.6. This SoCC has been prepared in accordance with Section 47 'Duty to consult local community' of the PA2008; its purpose being to set out how we intend to consult people living in the vicinity of the land that is needed for the Scheme; including an explanation of the consultation we will carry out before submission of our DCO application. It includes:
- A description of the consenting process we must follow
  - What we will be consulting on
  - Who we will be consulting
  - How people can respond to the consultation
  - How we will use feedback to the consultation
- 1.7. The SoCC will be published on Wednesday 4 June 2025 ahead of the start of the Phase Two consultation.
- 1.8. As required by Section 47(6) of the 2008 Act we will publish a Section 47 Notice in local newspapers for one week to advertise that the SoCC has been published as follows:
- Eastern Daily Press – Wednesday 4 June 2025
  - Diss Express – Friday 6 June 2025
- 1.9. Phase Two consultation is taking place over a period of seven weeks starting from Wednesday 18 June and running until Wednesday 6 August 2025. This would see the statutory period exceed the minimum period of 28 days as required by the 2008 Act. The deadline for receipt of feedback to the Phase Two consultation is 23:59 on Wednesday 6 August 2025.
- 1.10. The SoCC is available to view and download from the Applicant's website, and printed reference copies will be made available from Community Access Points (CAPs) (see Table 3). Printed reference copies will also be available to view at in-person information events being held during the Phase Two consultation (see Table 2).
- 1.11. Phase Two consultation will be undertaken in accordance with the methodology and commitments set out in the final SoCC as published.
- 1.12. Phase One (non-statutory) consultation**
- 1.13. Prior to Phase Two consultation, the Applicant has undertaken a non-statutory phase of consultation and engagement (Phase One consultation) to inform the emerging proposals for the Scheme and shape the ongoing design development. This included a six-week phase of public consultation, which was held from Wednesday 23 October to Friday 06 December 2024.
- 1.14. The aim of Phase One consultation was to introduce the Applicant, present the Applicant's early-stage proposals for the Scheme and give individuals an early opportunity to have their say and share their views and local knowledge.
- 1.15. The Applicant's Phase One consultation involved welcoming over 642 people to six in-person information events and one community webinar, and receiving over 350 pieces of feedback via the feedback form, email and letters. A community consultation postcard was sent to over 7,000 households and businesses within the vicinity of the Scheme, and the Phase One consultation was advertised in the Eastern Daily Press and Diss Express to publicise the opportunities to provide feedback.
- 1.16. Experience from Phase One consultation – and ongoing engagement since its close – have also informed the proposed approach to Phase Two consultation, as set out in this SoCC.

## 2. About us

- 2.1. The DCO application for the Scheme is being prepared by East Pye Solar Limited.
- 2.2. East Pye Solar Limited is a 100 per cent subsidiary of IGP UK Projects Limited, which is in turn a 100 per cent subsidiary of Island Green Power's UK group holding company, Island Green Power Group Limited (IGP). The company is wholly owned by Macquarie Asset Management, via its managed funds.
- 2.3. Established in 2013, IGP has delivered almost 40 solar and battery storage projects worldwide totalling more than two gigawatts of clean, renewable energy. This includes 21 projects in the UK, including the recently consented Cottam Solar and West Burton Solar NSIPs.
- 2.4. IGP specialises in the development of utility-scale solar projects and battery energy storage systems; overseeing the entire development process from start to finish, including sourcing land, securing grid connections and obtaining planning consents. When a project receives consent, it will either be constructed by IGP or sold to a specialist Engineering, Procurement and Construction (EPC) contractor who will build the solar project to be operated and managed by a long-term owner through its lifecycle. When the project reaches the end of operation, it will be decommissioned and land across the site restored to as good if not better quality. For this Scheme, all components will be decommissioned other than the National Grid Substation and the overhead line.
- 2.5. IGP's mission is to help the UK decarbonise and meet net zero goals, increasing solar energy generation and making more renewable energy possible while drastically reducing our carbon emissions.
- 2.6. IGP has appointed a professional project team to provide support and expertise throughout the development process for the scheme. Together, the project team has significant experience working across solar and DCO projects, and in developing plans that are sensitive to the needs of the local community and surrounding environment.

## 3. The Scheme

- 3.1. The Scheme comprises the construction, operation and maintenance and decommissioning of a ground-mounted solar photovoltaic (PV) generating station and associated development including a BESS, a number of 33kV and 132kV substations located within the solar array sites, two 400kV substations; and grid connection infrastructure including a new National Grid substation, the relocation of an existing overhead line and new pylons. Underground cables will run between the solar array sites within the cable route corridor (CRC) to connect to the BESS site and the new National Grid Substation Site (the Scheme's Point of Connection).
- 3.2. The Scheme (including the Sites, sub-Sites and the CRC) covers approximately 2,232 hectares ('ha') of land south of Norwich and north of Harleston. The total area of the Sites and Sub-sites is approximately 1,097 ha. The Site covers the following areas:
- Hempnall
  - Morningthorpe and Fritton
  - Woodton
  - Saxlingham Nethergate
  - Shotesham
  - Brooke
  - Kirstead
  - Seething
  - Hedenham
  - Tasburgh
  - Tivetshall
  - Great Moulton
  - Shelton and Hardwick
  - Wacton
  - Long Stratton
  - Tharston and Hapton
  - Pulham Market
- 3.3. The Scheme is grouped into Sites 1 to 10, the National Grid Substation Site and the BESS Site. Sites 3 to 10 are concentrated to the east of Long Stratton, with an additional cluster of land parcels including Sites 1 and 2, and the BESS Site and National Grid Substation Site located south of Great Moulton, approximately 6.5km to the south-west.
- 3.4. The siting of the new National Grid Substation is The National Grid Substation Site and the National Grid Substation Option 2 Site.
- 3.5. Currently, the Scheme includes a CRC. This is the broad area within which the Applicant is seeking to install the cable route connections between the solar PV panels and the new National Grid substation where the Scheme will connect to the National Grid. Through consultation and further design, the CRC has been further refined since Phase One consultation and will be further refined ahead of submitting the DCO application.
- 3.6. The proposed Scheme area (referred to as the 'Site') is shown in Figure 1. This map shows the current extent of land required for the Scheme.
- 3.7. The Scheme is anticipated as being able to deliver approximately 500 MW of renewable electricity to the National Grid and store up to 500 megawatt-hours ('MWh') of energy in the BESS.
- 3.8. The Scheme has the potential to:
- 3.8.1. Power the equivalent of 115,000 homes annually;
- 3.8.2. Contribute to climate targets and the decarbonisation of our electricity supply;
- 3.8.3. Boost Norfolk's emerging renewable energy industry, securing clean, affordable energy while providing investment and job opportunities in the county;
- 3.8.4. Enhance the natural environment by delivering a net gain in biodiversity; and
- 3.8.5. Provide community and local benefits for the surrounding area, with a commitment to work with the local community to identify and define community benefits.
- 3.9. The operational phase of the Scheme is expected to be 60 years. At the end of this period, a decommissioning plan will be enacted. This plan will require the removal of the solar PV panels, substation(s) and the BESS, and the restoration of the Site to its original use. The new National Grid Substation will be retained as it will form part of the transmission network.



# Scheme location and site boundary

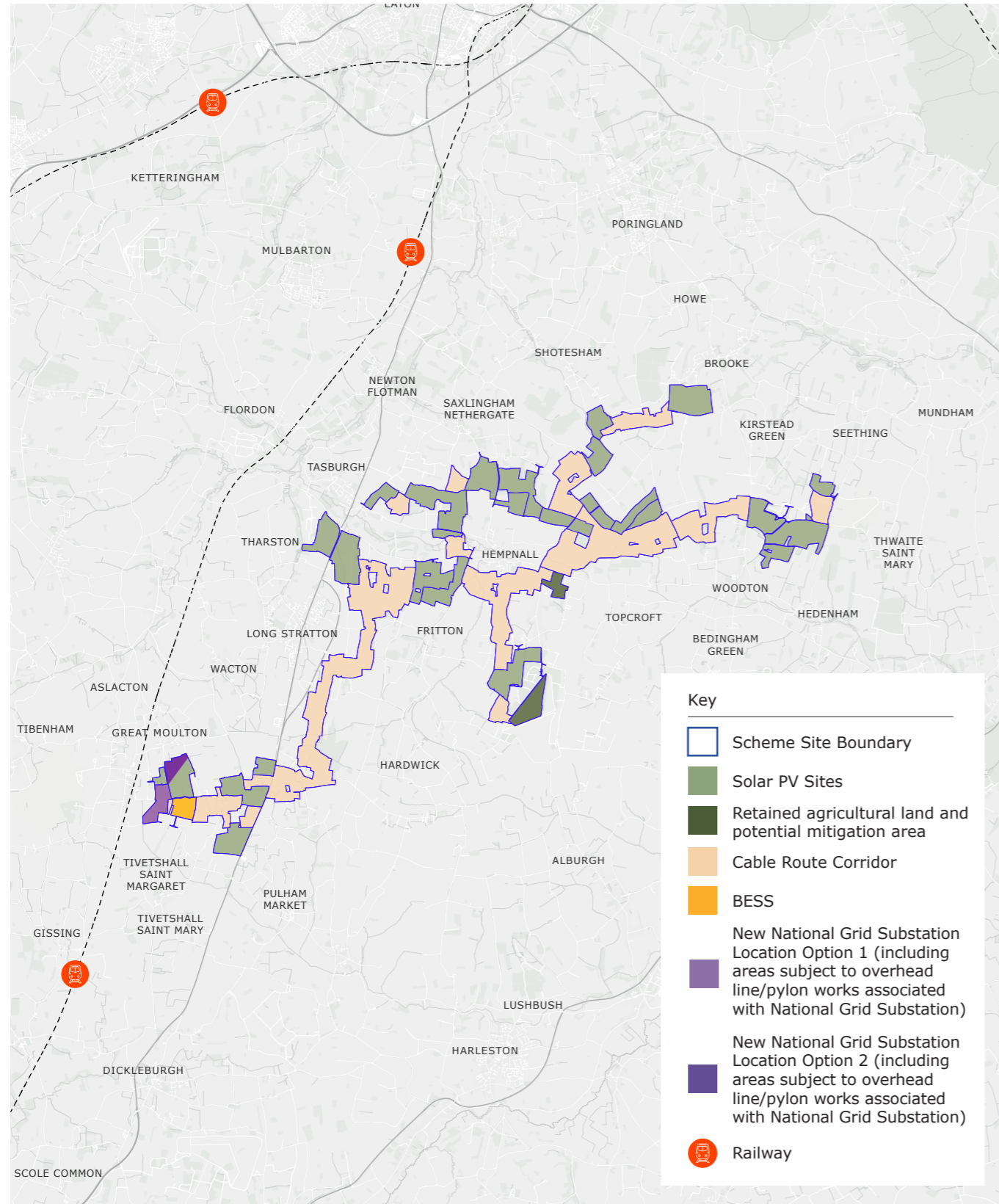


Figure 1: Scheme location map and Site boundary

3.10. The Scheme would comprise the following principal components (an indicative diagram showing the components of a typical solar project is set out in Figure 2):

- Solar PV panels that convert sunlight into electricity;
- The Solar PV panels will be attached to mounting structures, which form PV tables and will be arranged in rows;
- Conversion units comprising inverters, transformers and switchgear – convert the direct current (DC) electricity collected by the Solar PV panels into alternating current (AC) and step up the voltage so it can be exported to the national grid;
- A battery energy storage system (the BESS) enabling electricity generated by the solar PV panels to be stored on-site and released to the national grid so it can be stored until its needed;
- A new National Grid Substation to export the electricity generated by the Solar PV Panels to the national grid. The substation will include a control building with welfare facilities;
- On-site cables connecting the Solar PV panels and BESS to the inverters which, in turn, connect to the transformers;
- Grid connection cables providing the connection between the substations and the new National Grid Substation;
- Temporary construction compounds and temporary access tracks to enable access to the land within the Site for the purposes of constructing the Scheme;
- Fencing comprising wire mesh and wooden posts to enclose operational areas of the Site with pole mounted internal facing CCTV systems around the perimeter; and
- New planting, landscaping and biodiversity measures across the Site and around the perimeter to enhance biodiversity and improve the landscape.

## Components of a typical solar project

- Solar energy
- Fencing
- Solar panels
- Inverter (DC to AC power converter)
- Landscape area
- Substation
- Battery storage
- Underground cable

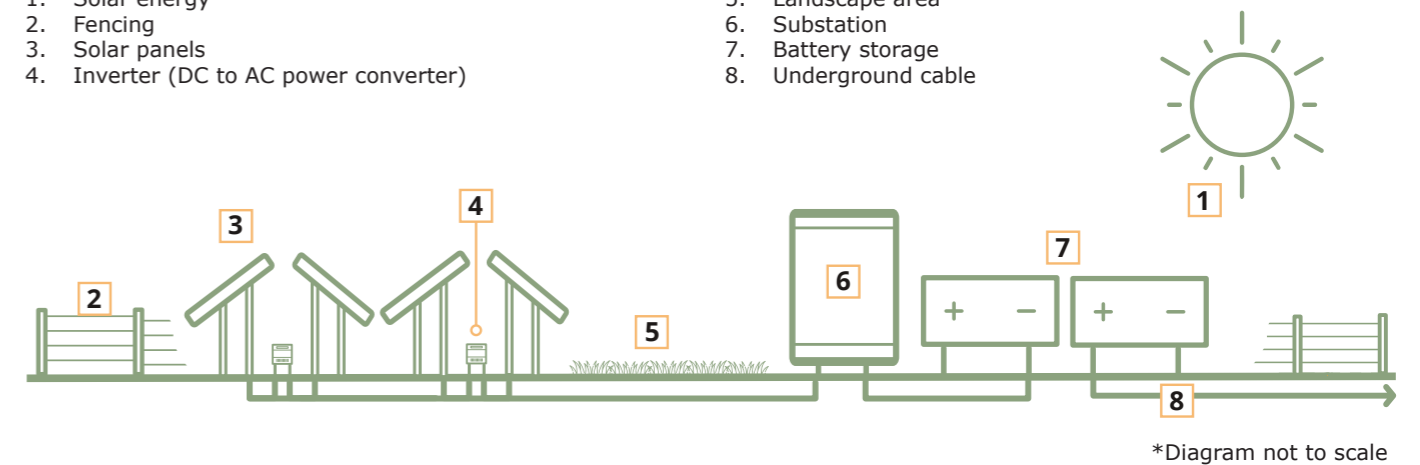


Figure 2: Components of a typical solar project

## 4. The DCO consenting process

- 4.1. The Scheme is classified as a NSIP because it comprises a solar energy generating station with a capacity of over 50MW.
- 4.2. The development consenting regime for an NSIP comes under PA2008 and associated guidance. This means that we need to submit a DCO application for the construction, operation, maintenance and decommissioning of the Scheme to PINS, the body responsible for managing the examination process for NSIPs.
- 4.3. Should PINS accept the DCO application, they will appoint an Examining Authority to examine the DCO application. Anyone, including landowners and members of the public, will be able to submit a Relevant Representation to PINS and become an Interested Party. Any Interested Party is then able to participate in the Examination process, for example by attending hearings.
- 4.4. After the Examination period ends, the Examining Authority will make a recommendation to the SoS on whether to grant development consent. The SoS will make the final decision on the DCO application. Table 1 provides an overview of the key stages of the DCO process.
- 4.5. Before submitting an application for development consent, the Applicant must carry out statutory consultation in accordance with PA2008. This document – the SoCC – has been prepared in accordance with Section 47(1) of the PA2008 and associated guidance. It explains how we intend to carry out Phase Two consultation with the local community during the pre-application stage of the DCO process, sharing information about and inviting feedback on the Scheme.
- 4.6. South Norfolk District Council and Norfolk County Council, as host local authorities, have been consulted on the contents of this SoCC as required by Section 47 (2) of the PA2008. We have had regard to feedback provided by both authorities, with it having been considered and used to inform this final version.
- 4.7. We currently anticipate submitting our DCO application to PINS in Winter 2025. Subject to the DCO being granted, the earliest construction would start is 2028 (see timeline in Section 11).
- 4.8. More information about the stages of the DCO application process and how you can have your say can be found on the PINS website<sup>1</sup>.

Stage	Description
1. Pre-application	We, as the Applicant, must consult the community and statutory consultees in compliance with PA2008. To demonstrate this to PINS, in the DCO application we will include a Consultation Report setting out our method for consulting, the feedback received in response to the consultation, and how this has influenced our proposals.
2. Acceptance	PINS, on behalf of the SoS, has 28 days to decide whether the application meets the required standards to proceed to the Examination. This includes consideration of whether our consultation has been adequate.
3. Pre-Examination	Further to the application being accepted, the Examining Authority will be appointed. Anyone can submit a Relevant Representation to PINS and become an Interested Party, to provide comments at the Examination stage, speak at hearings and hear about events and decisions as well as the progress of the application. The Examining Authority will hold a preliminary meeting and set out the timetable for Examination.
4. Examination	The Examining Authority has up to six months to complete the Examination of the DCO application. This will involve a series of open floor / public hearings, compulsory acquisition hearings and Issue Specific Hearings. This stage will also provide opportunities for Interested Parties to submit your comments in writing or orally at hearings.
5. Decision	A recommendation to the SoS will be issued by the Examining Authority within three months of the close of the Examination. The SoS then has a further three months to issue a decision on whether to grant development consent for the Scheme.

Table 1: DCO application process

<sup>1</sup><https://infrastructure.planninginspectorate.gov.uk/application%20process/the%20process/>

## 5. Our public consultation process

- 5.1. Pre-application consultation forms an important part of the planning and development process for the Scheme. The statutory requirements for DCO consultation is set out in the PA2008.
- 5.2. The proposed approach is an iterative two-phase consultation process for the Scheme whereby feedback and information received in response to the consultation will inform the refinement of the Scheme design and options.
- This includes:
- 5.3. Phase One (non-statutory) consultation, which was held for over six weeks between 23 October and 6 December 2024 to:**
- 5.3.1. Introduce the proposals and the Applicant;
- 5.3.2. Seek initial feedback on the Scheme to inform design refinements;
- 5.3.3. Identify local schemes or initiatives the Scheme could support or deliver; and
- 5.3.4. Understand any opportunities to improve consultation methods ahead of Phase Two consultation.
- 5.4. Phase Two consultation, will be held for seven weeks between Wednesday 18 June and Wednesday 6 August 2025 to provide further information on:**
- 5.4.1. Our proposals for the Scheme, including a Site Location Plan indicating the proposed layout.
- 5.4.2. The Preliminary Environmental Information Report (PEIR), which sets out a preliminary assessment of likely significant environmental effects of the Scheme.
- 5.4.3. Potential opportunities for community benefits associated with the Scheme.
- 5.4.4. Anything else consultees and communities would like us to consider as part of our proposals for the Scheme.
- 5.5. In carrying out Phase One consultation on the emerging proposals for the Scheme, the Applicant sought to help stakeholders and local communities understand the Scheme and how they can become involved at the pre-application stage.
- 5.6. Phase One consultation – such as attendance at public information events and the levels and format of feedback received – has also been considered by the Applicant when preparing their proposed approach to Phase Two consultation.
- 5.7. The project team has considered all feedback received during Phase One consultation in depth. This process has informed further updates to the proposals for the Scheme.
- 5.8. The Applicant published a Phase One Consultation Summary Report ('CSR') in March 2025. The purpose of the CSR is to present the feedback received at Phase One consultation and explain how this is being considered by the project team. The CSR is available to view on our website via the Documents Library: [www.eastpyesolar.co.uk/documents](http://www.eastpyesolar.co.uk/documents), and its availability was publicised through notifying key stakeholders and community members. The information gathered during this first phase of consultation has also informed the preparation of this SoCC and Phase Two consultation, which is being held for seven weeks between Wednesday 18 June and Wednesday 6 August 2025.
- 5.9. The Applicant is now preparing to undertake a statutory phase of consultation, as described in this SoCC.
- 5.10. Following this, a Consultation Report will be submitted to PINS as part of the DCO application. The Consultation Report will describe and evidence consultation undertaken, the level of engagement with this consultation, and how consideration has been given to feedback received. We intend to submit a DCO application to PINS in Winter 2025.

## 6. Method of consultation

- 6.1. We are committed to good practice in public consultation. Consultation for the Scheme is also informed by the latest government guidance for NSIPs, published in April 2024<sup>2</sup>.
- 6.2. We will employ a variety of consultation methods so that our consultation is appropriate and accessible. The methodology has had regard to the experience of the Phase One (non-statutory) consultation on the Scheme. The Statements of Community Involvement (SCI) adopted by the local authorities have also been reviewed and considered. The methodology utilises a range of tools and techniques to ensure all identified stakeholders are effectively consulted and involved in the Scheme development process.
- 6.3. Consultation and communication methods will include:
- 6.3.1. Dedicated communication channels, such as a freephone number (0808 281 3175), email ([info@eastpyesolar.co.uk](mailto:info@eastpyesolar.co.uk)) and freepost address (FREEPOST East Pye Solar).
- 6.3.2. Scheme website ([www.eastpyesolar.co.uk](http://www.eastpyesolar.co.uk)).
- 6.3.3. Direct mail of consultation information to properties within the defined core consultation zone (see Section 7.2).
- 6.3.4. Information posters issued for display at public venues within the core consultation zone.
- 6.3.5. Use of local print and online media – editorial and advertising.
- 6.3.6. In-person information events at publicly accessible locations.
- 6.3.7. Virtual webinar format information event.
- 6.3.8. Provision of information in alternative languages and formats on request. For further details please see Section 9 'How we will consult'.
- 6.4. The information and materials we will use to inform the consultation will provide details of:
- 6.4.1. The extent of the land proposed for the Scheme.
- 6.4.2. A PEIR, including results from ongoing assessments, descriptions of potential likely significant environmental effects arising from the Scheme, and proposals for how these could be managed and mitigated.
- 6.4.3. An indicative design at this stage, setting out:
- Areas for solar PV arrays, BESS, Substations, including the potential Sites for the new National Grid Substation
  - Areas subject to overhead line/pylon works associated with National Grid Substation
  - Cable Route Corridor
  - Proposed access points
  - Areas for potential mitigation and enhancement
  - Proposed temporary construction compounds

<sup>2</sup><https://www.gov.uk/guidance/planning-act-2008-pre-application-stage-for-nationally-significant-infrastructure-projects>

## 7. Who we will consult

7.1. We are seeking to engage with a range of individuals and groups and want our consultation to be accessible for everyone to take part. In accordance with Section 47 of the PA2008, the Applicant will consult people living in the vicinity of the land to ensure that communities within the vicinity of the proposals are aware of consultation opportunities.

### 7.2. Core consultation zone

7.3. To determine the core consultation zone, we considered where may be directly or indirectly impacted by the Scheme permanently or temporarily as a result of its construction, operation, maintenance, and decommissioning.

7.4. Having considered these impacts, we then determined an appropriate core consultation zone by extending a minimum distance of two kilometres ('km') from the site boundaries of the Solar Panel Areas, the BESS and the new National Grid Substation, and 500 metres ('m') from the edge of the Cable Route Corridor.

7.5. The zone has been extended further, where proportionate, to include reasonable consideration of:

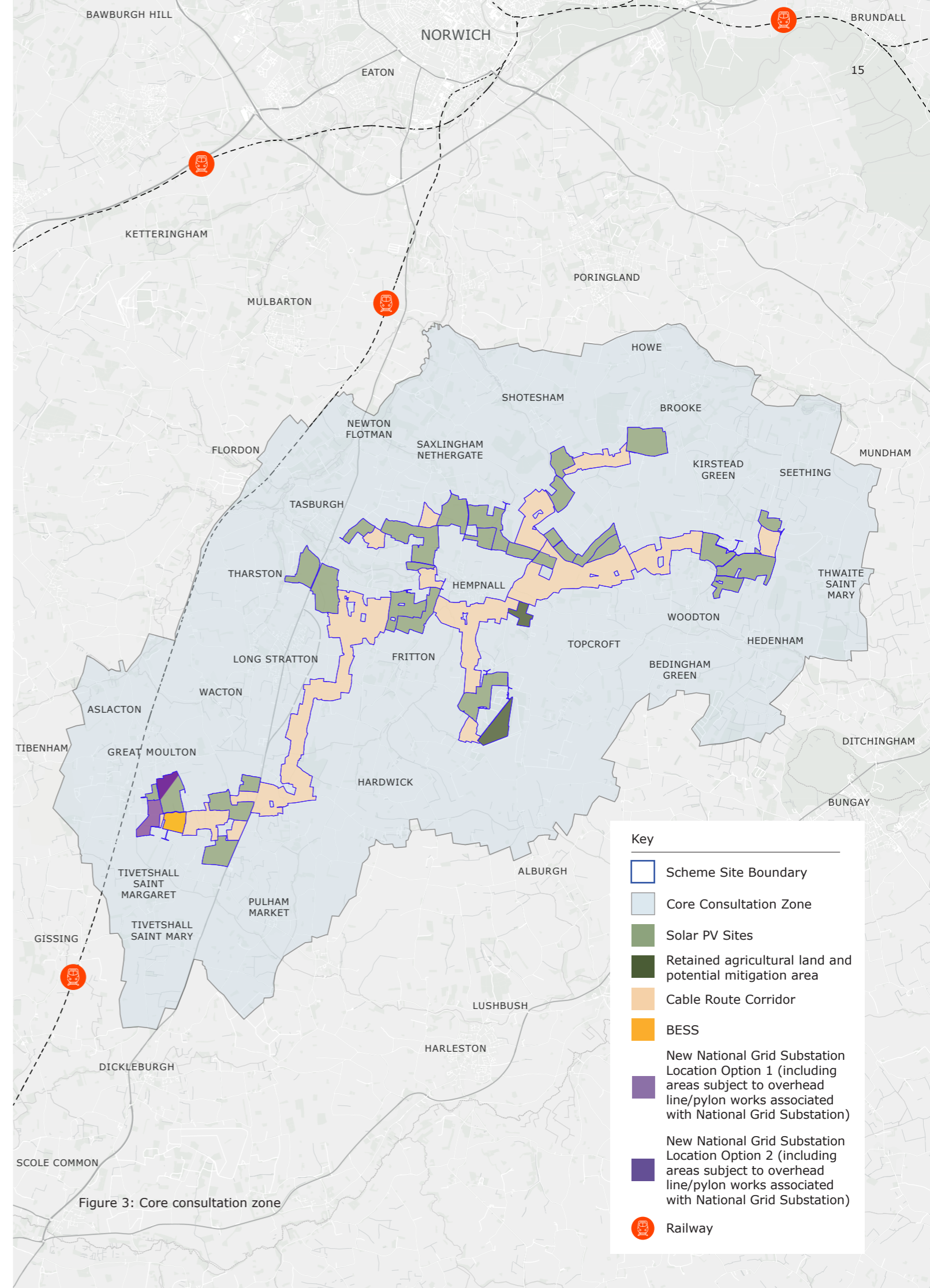
7.5.1. Existing natural and human geographical boundaries, for example, railway lines, A-roads and/or motorways, for example the Great Eastern Main Line between Diss and Norwich, and the A146.

7.5.2. Coverage of the parishes that host any of the Scheme as follows:

- Brooke Parish Council;
- Great Moulton Parish Council;
- Hedenham Parish Meeting;
- Hempnall Parish Council;
- Howe Parish Meeting;
- Kirstead Parish Meeting;
- Long Stratton Town Council;
- Morningthorpe and Fritton Parish Council;
- Pulham Market Parish Council;
- Saxlingham Nethergate Parish Council;
- Seething Parish Council;
- Shelton and Hardwick Parish Council;
- Shotesham Parish Council;
- Tasburgh Parish Council;
- Tharston and Hapton Parish Council;
- Tivetshall Parish Council;
- Wacton Parish Council; and
- Woodton Parish Council.

7.6. Information about the Scheme will be communicated directly to properties within the core consultation zone including residents, local businesses and community organisations (including parish councils), to raise awareness and encourage participation in the consultation through a selection of communication channels (see Section 9).

7.7. The core consultation zone is shown in Figure 3. There are over 8,486 properties within the core consultation zone, which is subject to change based on the Site Boundary for the Scheme and available Royal Mail data.



**7.8. Consulting people beyond the core consultation zone**

- 7.9. We recognise that individuals, groups and organisations who live and work beyond the core consultation zone may have an interest in our proposals and wish to participate in the consultation.
- 7.10. To give these individuals and organisations the opportunity to participate in this Phase Two consultation, we will raise awareness in the following ways:
- 7.10.1. Directly notify any individual who has registered to receive information about the Scheme;
  - 7.10.2. Advertise the consultation in local media outlets reaching audiences beyond the core consultation zone;
  - 7.10.3. Publish consultation materials so they are available to view online; and
  - 7.10.4. Fulfil requests for copies of the consultation materials through the Scheme communication channels.
- 7.11. In addition to publishing a Section 48 notice in the local and national press and London Gazette, as stated under Section 48 of the PA2008, we will also engage those parties representing the interests of those communities which lie beyond the core consultation zone including:
- 7.11.1. Members of Parliament representing the host constituencies:
    - Ben Goldsborough MP (South Norfolk); and
    - Adrian Ramsay MP (Waveney Valley).
  - 7.11.2. Norfolk County Council electoral division members (councillors).
  - 7.11.3. South Norfolk Council ward members (councillors).
  - 7.11.4. Parish councils that are within the Scheme Boundary (see section 7.2).
  - 7.11.5. Gateway organisations and community groups (see Appendix 1).

**7.12. Consulting with under-represented or seldom heard groups**

- 7.13. The Applicant is committed to ensuring that the consultation process, and associated communications, reach as many parts of the community as practicable. We recognise that there are individuals, groups and communities for whom there may be certain barriers which could prevent them from fully participating in the consultation – or make them less likely to participate in or respond to traditional consultation techniques.
- 7.14. The Applicant has identified various 'under-represented' or 'seldom-heard' groups and individuals who may be less likely to engage with, or participate in, consultation. See Appendix 1 for a list of the organisations and community groups we will contact.
- 7.15. The Applicant's consultation methodology (see Section 9) has been developed to communicate as effectively as possible with these groups so they can have their say. Requests for specific consultation activity to cater for these groups will be considered on a case-by-case basis. This will then be agreed and planned with the requesting organisations.

## 8. When we will consult

- 8.1. The Applicant will hold its Phase Two consultation for a period of seven weeks (49 days) from Wednesday 18 June to Wednesday 6 August 2025. This consultation period exceeds the minimum period of 28 days as required by the PA2008.
- 8.2. Please see section 9.26 for a list of public information events. While the proposed consultation period overlaps with the start of the summer holiday period for schools, all information events will be held before school holidays begin on 22 July 2025.



## 9. How we will consult

9.1. We have identified a number of ways in which people can:

- 9.1.1. Access information about our proposals and their potential effects;
- 9.1.2. Review and comment on consultation documents at a time which is convenient to them; and
- 9.1.3. Express their views regarding the Scheme by submitting feedback to the Phase Two consultation via easy to use and accessible methods.

### 9.2. Scheme website

9.3. A dedicated Scheme website ([www.eastpyesolar.co.uk](http://www.eastpyesolar.co.uk)) was launched in September 2024 to host Scheme information and will be updated to include the latest information regarding the Phase Two consultation.

9.4. All of the consultation materials will be available to view and download, free of charge, from Wednesday 18 June 2025 on the Scheme website via the Documents page: [www.eastpyesolar.co.uk/documents](http://www.eastpyesolar.co.uk/documents)

9.5. It will be possible to submit a response to the consultation via the website using a dedicated online feedback form during the consultation period.

9.6. The website will also allow people to register their contact details with the Scheme so they can receive future updates after the consultation period.

### 9.7. Direct communications

9.8. Direct communications – via a community consultation postcard – will be issued to all properties within the core consultation zone (see Figure 2) and to any other parties who registered to be kept informed about the Scheme by post.

9.9. This community consultation postcard will notify local residents and businesses of the consultation period, opportunities to find out more information (including details of public information events), how to provide feedback, and the response deadline for comments to be submitted.

9.10. It will be printed and posted prior to the Phase Two consultation period commencing.

9.11. Identified key stakeholders and those that have registered to be kept informed with the Scheme will also be notified on the day of the Phase Two consultation launch via email. The email will include information about the consultation period, opportunities to find out more information, how to provide feedback and the response deadline for comments to be submitted.

### 9.12. Phase Two Consultation Information Leaflet

9.13. A Phase Two Consultation Information Leaflet will be published on the Scheme website at the start of the Phase Two consultation. This will provide a summary of the proposals we are consulting on, details of how people can take part in the consultation, how feedback will be considered and used to inform proposals, and how we will provide information on the outcome of the consultation.

9.14. Printed copies of this document will be available to take away at in-person information events and Community Access Points (CAPs). Copies will also be made available on request in digital or hard copy format, free of charge.

### 9.15. Feedback Form

9.16. A feedback form will be made available to enable people to provide feedback on the proposals. Specific questions will be included on particular areas on which we are seeking comment, however, no questions will be mandatory, and all comments made on the form will be accepted.

9.17. An online version of the feedback form will be hosted on the Scheme website so that feedback can be provided electronically.

9.18. Hard copy forms will be available at in-person public information events and at CAPs. An online PDF version of the feedback form will also be available to download from the Scheme website from the start of the consultation period. Copies of the feedback form will also be made available on request in digital or hard copy format, free of charge.

9.19. While the feedback form is intended to encourage and support the provision of feedback, we recognise some people may prefer to provide written comments outside of set questions. All written comments will be accepted and can be submitted during the Phase Two consultation period by email to [info@eastpyesolar.co.uk](mailto:info@eastpyesolar.co.uk) or by post to FREEPOST EAST PYE SOLAR (no stamp or further address details required).

9.20. Feedback submitted to the consultation by email must be received by 23:59 on Wednesday 6 August 2025. Written feedback sent to the Project freepost address which is received after this deadline will be accepted subject to the postmark date being no later than the prescribed deadline of 6 August 2025.

### 9.21. Technical documents, maps and plans

9.22. We will publish all the technical documents we have produced which describe and evaluate our proposals for the Scheme on the Scheme website when consultation launches on 18 June 2025. These comprise:

- The PEIR. Please see Section 10 of this SoCC for further details.
- A Non-Technical Summary (NTS) of the PEIR.
- Maps and plans at appropriate scales.

9.23. The full PEIR will be available to view and download, free of charge, on the Scheme website and will be available to view in printed format at public information events and at the Long Stratton Library (see section 9.35 for further details).

9.24. A hard copy of the PEIR can be provided on request, though there will be a cost associated with this. The cost of printing the PEIR will be confirmed on the Scheme website prior to the start of the consultation period.

9.25. The SoCC, Phase Two Consultation Information Leaflet, Feedback Form and PEIR NTS can be made available in hard copy, large print, audio or braille format, free of charge, on request using the dedicated communication channels (please see the back page of this SoCC).

**9.26. Information events**

9.27. During our Phase Two consultation, we will hold seven public information events – six in-person and one online. These events will be held towards the start of the consultation period and will be held prior to the start of the school summer holidays, in line with Norfolk County Council’s term times<sup>3</sup>. It also allows time for the events to be effectively publicised and for consultees to access and consider consultation information before attending, while allowing time after events for attendees to prepare and submit feedback ahead of the response deadline.

9.28. Events will be held across different days of the week and cover a range of times to accommodate different working hours to promote accessibility and attendance. This will include holding an event on a Saturday and events running into the evening. In-person events will be ‘drop-in’ style events, where attendees can attend at any time within the advertised hours.

Date and time	Location
Wednesday 2 July 2025, 14:30 – 19:30	<b>Aslacton and Great Moulton Coronation Hall</b> Carr Lane, Great Moulton, Norwich, NR15 2LA
Thursday 3 July 2025, 14:30 – 19:30	<b>Saxlingham Nethergate Village Hall</b> , Steward Close, Saxlingham Nethergate, Norwich, NR15 1AJ
Thursday 10 July 2025, 14:00 – 19:00	<b>Long Stratton Village Hall</b> Ipswich Road, Long Stratton, Norwich, NR15 2TA
Friday 11 July 2025, 14:30 – 19:30	<b>Brooke Village Hall</b> Norwich Road, Brooke, Norwich, NR15 1AB
Saturday 12 July 2025, 11:00 – 15:00	<b>Hempnall Village Hall</b> Bungay Road, Hempnall, Norwich, NR15 2NG
Tuesday 15 July 2025, 14:30 – 19:30	<b>Seething and Mundham Village Hall</b> , Wheelers Lane, Seething, Norwich, NR15 1EJ
Monday 21 July 2025, 18:30 – 20:00	<b>Community Webinar</b> via Zoom (details of how to register for this webinar are available on our website)

Table 2: Programme for Phase Two consultation information events

9.29. The full programme of events being held is set out in Table 2.

9.30. At events, attendees will be able to find out information about the Scheme and what we are consulting on. Members of the project team will be present to discuss the proposals and answer questions.

9.31. In-person information events will be held at venues within the core consultation zone (see Section 7) that are publicly accessible and accommodate the needs of individuals with limited mobility.

9.32. Information available at these events will include:

- This SoCC (for reference only).
- Event display panels and boards (for viewing only).
- Maps of the Scheme (for viewing only).
- Phase Two Consultation Information Leaflet (for reference and to take away).
- A BESS Fact Sheet (for reference and to take away).
- Feedback Form (for reference and to take away).
- The PEIR and accompanying NTS (for reference only).

9.33. The Applicant will also hold one online information event (webinar) via Zoom. The webinar will be held for anyone to join via telephone or the internet. Attendees will be required to register for the online information event in advance via the automated registration form on the Zoom website. A link to the registration form for the webinar will be available on the Scheme website.

9.34. The format of this webinar will involve the presentation of information consistent with that made available at in person events by representatives from the project team, followed by a moderated questions and answer session. Participants will be invited to submit questions during the webinar. A recorded version of the webinar will be made available on the Scheme website after the session.

<sup>3</sup><https://www.norfolk.gov.uk/article/38213/Term-dates-and-school-holidays-2024-2025>

**9.35. Community Access Points**

9.36. Community Access Points (CAPs) are deposit locations where we will make hard copies of the SoCC and relevant Phase Two consultation materials available.

9.37. Table 3 below indicates where the relevant Phase Two consultation materials will be made available.

9.38. The materials include:

- 9.38.1. Copies of this SoCC for reference only. This will be available at CAPs before the Phase Two consultation commences;
- 9.38.2. Copies of the Phase Two Consultation Information Leaflet for reference and for taking away;
- 9.38.3. Copies of the Feedback Form for reference and taking away; and
- 9.38.4. A copy of the PEIR Non-Technical Summary for reference only.

9.39. A copy of the PEIR will be available at Long Stratton Library for reference only.

9.40. All CAPs host computers with internet access to enable access to the full PEIR via the Scheme website. While access to computers at the libraries is free, a membership for the library may be required.

9.41. Locations with Open Library Access mean that you can access the library, its computers and spaces even when the building is unstaffed. A membership for the library may be required. Further information can be found at: [www.norfolk.gov.uk/openlibrary](http://www.norfolk.gov.uk/openlibrary)

9.42. Opening times and accessibility may vary, so it is advised to check with venues directly for up-to-date information.

Location	Current Opening Times
<b>Long Stratton Library</b> The Street, Long Stratton, NR15 2XJ	Monday: 08:00 – 11:00 (Open Library access); 11:00 – 19:00 (staffed hours) Tuesday and Thursday: 08:00 – 11:00 (Open Library access); 13:00 – 19:00 (staffed hours) Wednesday and Friday: 08:00 – 19:00 (Open Library access) Saturday: 10:00 – 11:00 (Open Library access); 11:00 – 16:00 (staffed hours) Sunday: 10:00 – 16:00 (Open Library access)  Telephone: 01508 530797
<b>Loddon Library</b> 31 Church Plain, Loddon, NR14 6EX	Monday, Thursday and Friday: 08:00 – 10:00 (Open Library access); 10:00 – 19:00 (Staffed hours) Tuesday and Wednesday: 08:00 – 19:00 (Open Library access) Saturday: 08:00 – 13:00 (Open Library access); 13:00 – 16:00 (Staffed hours) Sunday: 10:00 – 16:00 (Open Library access)  Telephone: 01508 520678
<b>Bungay Community Library</b> Wharton Street, Bungay, NR35 1EL	Monday: 09:00 – 14:30 Tuesday to Saturday: 09:00 – 17:00 Sunday: Closed  Telephone: 01986 506060
<b>Poringland Library</b> Overtons Way, Poringland, Norwich, NR14 7WB	Monday and Friday: 08:00 – 14:00 (Open Library access); 14:00 – 19:00 (Staffed hours) Tuesday and Wednesday: 08:00 – 10:00 (Open Library access); 10:00 – 19:00 (Staffed hours) Thursday: 08:00 – 19:00 (Open Library access) Saturday: 08:00 – 10:00 (Open Library access); 10:00 – 16:00 (Staffed hours) Sunday: 10:00 – 16:00 (Open Library access)  Telephone: 01508 494891

Table 3: Community Access Points

**9.43. Availability of materials**

9.44. Table 4 below summarises the availability of consultation materials during the Phase Two consultation period.

Document	In-person information events	Scheme website*	Hard copy on request	Direct mailed	Community Access Points
<b>Preliminary Environmental Information Report (PEIR)</b>	Yes	Yes	Yes (charges apply)	No	Yes (only at Long Stratton Library)
<b>PEIR Non-Technical Summary (NTS)</b>	Yes	Yes	Yes (charges apply)	No	Yes (at all libraries, for reference only)
<b>Community Consultation Postcard</b>	No	Yes	Yes	Yes	No
<b>Phase Two Consultation Information Leaflet</b>	Yes	Yes	Yes	No	Yes (to take away)
<b>Feedback Form</b>	Yes	Yes	Yes	No	Yes (to take away)
<b>Event Displays and Maps</b>	Yes	Yes	No	No	No
<b>Statement of Community Consultation (SoCC)</b>	Yes	Yes	Yes	No	Yes (for reference only)

Table 4: Availability of consultation materials

\*Documents and materials will be available as PDFs to view and download free of charge from the 'Documents' section of the Scheme website: [www.eastpyesolar.co.uk/documents](http://www.eastpyesolar.co.uk/documents)

**9.45. Providing feedback**

9.46. The Scheme communication channels will remain open throughout the pre-application stage. Outside the Phase Two consultation period, stakeholders may speak to a member of our Scheme community relations team.

9.47. During the consultation period, written feedback can be provided by:

- Submitting an online feedback form through the Scheme website
- Completing a PDF version of the hard copy feedback form and submitting via email: [info@eastpyesolar.co.uk](mailto:info@eastpyesolar.co.uk)
- Completing a printed copy of the feedback form and submitting it at an in-person information event or returning it to FREEPOST EAST PYE SOLAR (no stamp required)
- Sending an email to: [info@eastpyesolar.co.uk](mailto:info@eastpyesolar.co.uk)
- Providing comments in writing and posting them to FREEPOST EAST PYE SOLAR (no stamp required)

9.48. Feedback must be received by 23:59 on Wednesday 6 August 2025. Responses received after that date may not be considered.

9.49. Questions and requests for information can be made using the communication channels above and by calling the Scheme's freephone line 0808 281 3175 (open 09:00 – 17:00 Monday to Friday, with a voice message service operating outside of these hours so a callback can be made if requested).

9.50. By appointment with the project team, it will be possible to make a verbal representation over the Scheme's freephone 0808 281 3175. Feedback provided will be transcribed and agreed verbally prior to submission. Appointments to provide verbal feedback should be made by contacting the team via Scheme-dedicated freepost, email address or telephone number described above.

**9.51. Section 47 Notice**

9.52. Alongside the publication of the SoCC on the Scheme website, the Phase Two consultation will be publicised through a Section 47 Notice in local newspapers in the vicinity of the Scheme.

9.53. The Section 47 Notice will appear in the Eastern Daily Press on 4 June 2025 and the Diss Express on 6 June 2025.

**9.54. Section 48 Notice**

9.55. As required by Section 48 of the PA2008, we will publish a Section 48 Notice advertising our intention to submit a DCO application and the Phase Two consultation in local newspapers in the vicinity of the Scheme for two consecutive weeks, and a national newspaper and the London Gazette for one week.

9.56. A list of the newspaper outlets and dates when the Section 48 Notice will appear is set out in Table 5.

Newspaper outlet	1st publication date	2nd publication date
Diss Express	6 June 2025	13 June 2025
Eastern Daily Press	11 June 2025	18 June 2025
The Guardian	16 June 2025	N/A
London Gazette	18 June 2025	N/A

Table 5: S48 Notices Schedule

**9.57. Media, advertising and publicity**

- 9.58. To raise awareness about the Scheme and consultation within and beyond the core consultation zone, we will issue a media release to local and trade press at the start of the consultation to provide an overview of the Scheme, why we are consulting and how people can access information about the Scheme, including dates of information events (online and in-person) and the deadline for receipt of responses.
- 9.59. A further media release will be issued at the close of consultation.
- 9.60. In addition to publishing a formal Section 48 Notice in local and national newspapers, we will place advertisements in local media to publicise the consultation and information events taking place (online and in-person).
- 9.61. A list of local and regional media outlets to whom media releases will be issued, and at least one round of advertising place with, is set out in Table 6.

**Media releases will be issued to:**

- BBC Look East
- BBC Radio Norfolk
- Beccles and Bungay Journal
- Bury Mercury
- Cambridgeshire Live
- Dereham Times
- Diss Express
- Diss Mercury
- East Anglia Bylines
- East Anglian Daily Times
- Eastern Daily Press
- Your Norfolk
- Fakenham and Wells Times
- Greatest Hits Radio (Norfolk and North Suffolk)
- Inside Out East
- ITV Anglia
- Lynn News
- Norfolk News
- Norwich Evening News
- South Norfolk Life
- Village People (South Norfolk)
- Wymondham & Attleborough Mercury

**Advertisements will be placed with:**

- Diss Express

Table 6: Media outlets

- 9.62. Posters publicising the consultation will be issued to information event venues, and the clerks of parish councils for display on local parish notice boards. They will also be made available to other community venues and local information points within the core consultation zone. The posters will be displayed at the discretion of the community venue or local information point.

**9.63. Changes to consultation activities**

- 9.64. Should any change to our consultation activities be required due to circumstances outside our control, details will be publicised in line with the methods set out in this SoCC to the extent it is reasonable and proportionate to do so.

**9.65. Coordination with other NSIP developers**

- 9.66. The Applicant recognises that there are a number of other NSIPs in the South Norfolk District and Norfolk County. Ahead of the Phase Two consultation, the Applicant will seek to engage with third-party developers to determine the timing of any defined consultation periods and activities, including when in-person events will be taking place. Where practicable, the Applicant will try to ensure that in-person events do not take place on the same days to ensure all stakeholders can take part in the consultations for all projects.

# 10.Environmental information

- 10.1. The Scheme is classified as an Environmental Impact Assessment ('EIA') development under the Infrastructure Planning (Environmental Impact Assessment) Regulations 2017. The DCO application will therefore require an EIA to be carried out to identify and evaluate the likely significant effects of the Scheme on the environment. The EIA will identify measures to mitigate adverse environmental effects.
- 10.2. The EIA is an iterative process in which the assessment of environmental impacts is carried out in parallel with the Scheme design process.
- 10.3. We will consult on the PEIR, which will allow consultees to consider and provide feedback on preliminary EIA information.
- 10.4. The results of the EIA will be set out in the Environmental Statement ('ES') which will be submitted as part of the DCO application.
- 10.5. Table 7 details the EIA process, including the stages of Scoping, PEIR and ES.

**EIA Scoping**

Our Scoping Report was published on 15 January 2025 and described the Scheme and the assessments of likely significant environmental effects.

In response to the Scoping Report, the Scoping Opinion was issued by PINS on 25 February 2025. The Scoping Report and Scoping Opinion can be viewed on PINS' dedicated webpage for the Scheme: <https://national-infrastructure-consenting.planninginspectorate.gov.uk/projects/EN0110014/documents>

**Preliminary Environmental Information Report ('PEIR')**

The PEIR and NTS of the PEIR will be made available to inform statutory consultation.

The PEIR is a technical document that sets out the initial findings of the EIA to date and identifies proposed mitigation measures to control or reduce environmental effects the Project may have on the environment. It is intended to facilitate consultation on the Project. The NTS will accompany the PEIR and is a non-technical summary of the PEIR assessments.

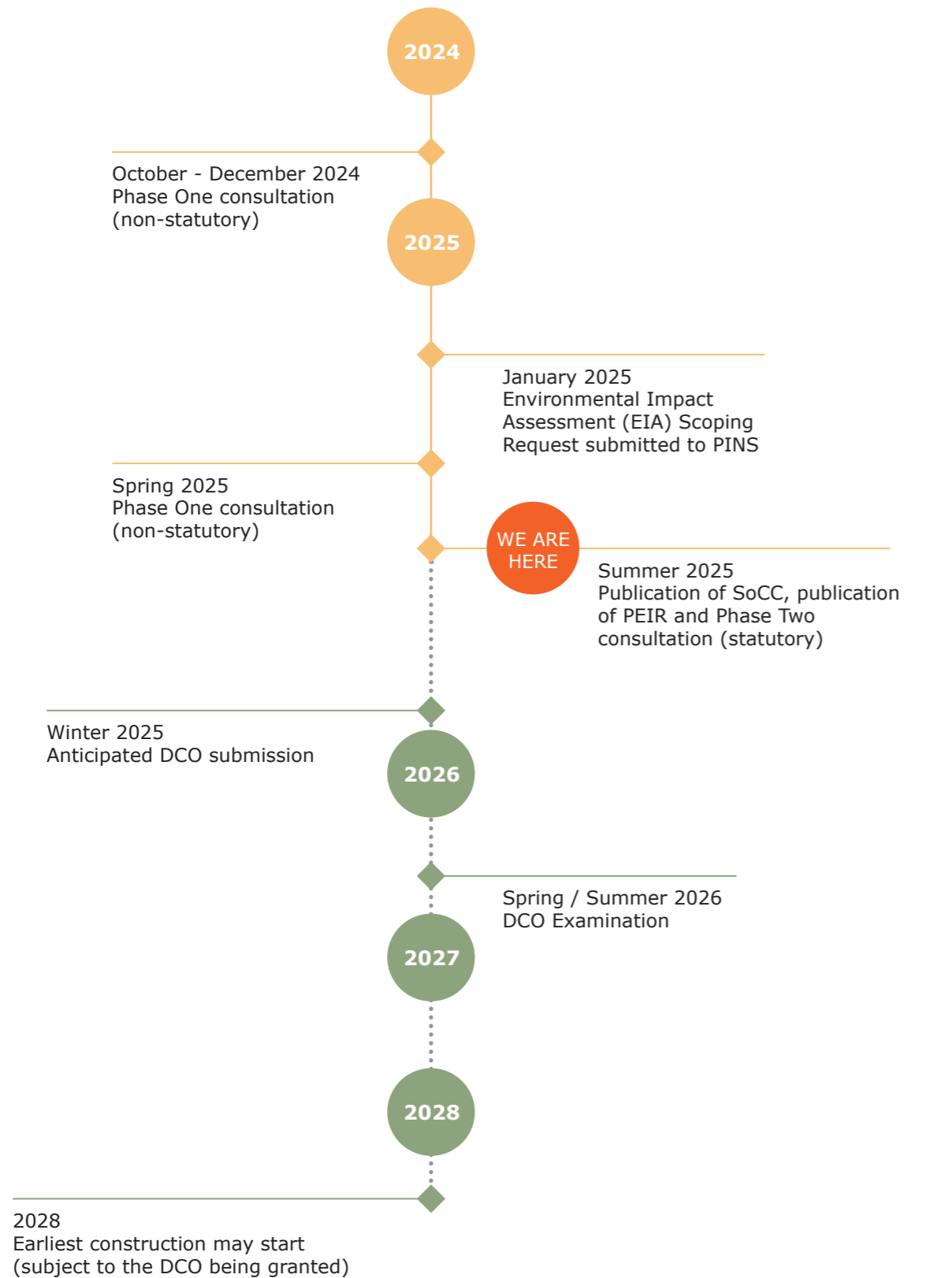
The PEIR is being presented during this Phase Two consultation and enables consultees to develop an informed view of the likely significant environmental effects of the Scheme.

**Environment Statement ('ES')**

The ES will advance the content of the PEIR and continue to incorporate the responses from the Phase Two consultation, stakeholder engagement and results of the surveys undertaken. It will also describe any changes to the Scheme and any mitigation measures. The ES will form part of the DCO application.

Table 7: The EIA process

# 11. Indicative Scheme timeline\*



\*Dates are indicative and could be subject to change

# 12. Next steps and contact details

## 12.1. Consultation responses

- 12.2. Consultation responses must be submitted in writing or online by 23:59 on Wednesday 6 August 2025, unless agreed otherwise with us directly. Responses received after that date may not be considered.
- 12.3. When a respondent submits feedback to the consultation (via the online feedback form or via email) an automated acknowledgement to confirm receipt will be issued.
- 12.4. Any person submitting feedback online who is concerned that they have not received acknowledgement of receipt is advised to contact the community relations team using the communication channels.

## 12.5. Information services

- 12.6. The community relations team is available to provide people with assistance in finding out about the Scheme and our Phase Two consultation.
- 12.7. You can get in touch with the Scheme community relations team using any of the communication channels listed below:
  - Email: [info@eastpyesolar.co.uk](mailto:info@eastpyesolar.co.uk)
  - Freephone: 0808 281 3175 (09:00-17:00 Monday to Friday excluding Bank Holidays, with a voicemail service to take messages outside of these hours)
  - Post: FREEPOST EAST PYE SOLAR (no stamp required)

- 12.8. These communication channels will remain open throughout the pre-application stage. This is to enable engagement between consultees, communities and the project team to continue outside of the consultation period. The Scheme website may also be updated with relevant information as it becomes available.

## 12.9. Ongoing engagement and potential further consultation

- 12.10. If, as a result of feedback, our proposals change to the extent we consider it necessary to undertake further targeted consultation, this will be undertaken, so far as relevant and proportionate, in accordance with the principles and methods set out in this SoCC.

# Appendix 1 Gateway Organisations and Community Groups

Category	Gateway organisations / group
Children and young people	1st Long Stratton Scout Group Brownies and Rainbows Norfolk Girlguiding Girlguiding Norfolk County Ignite Youth Scheme Let's Talk About Loss Loddon Army Cadets MAP MTM Youth Services CIC Norfolk Army Cadets Norfolk Federation of Young Farmers Club Norfolk Youth Advisory Board / South Norfolk Youth Advisory Board Norfolk Youth Parliament  <b>Primary Schools and Pre-Schools</b> Aslacton Primary School Brooke VC Church of England Primary School Carleton Rode CEVA Primary School Hempnall Primary School Manor Field Infant and Nursery Preston Primary School Pulham Primary School Saxlingham Nethergate C of E VC Primary School Seething and Mundham Primary School St Mary's C of E Junior Academy Tivetshall Primary School Woodton Primary School  <b>Secondary and Sixth Form Attached Schools</b> Framingham Earl High School Harleston Sancroft Academy Hobart High School Langley School Long Stratton High School
Lone parents	Family Lives Gingerbread – support for single parents
Older people	Age UK Norfolk Friends of the Elderly Norfolk Older Peoples Partnerships Re-Engage  About With Friends Alzheimer's Society – Norfolk and Suffolk Arts for Health – Creative Arts East Asperger East Anglia Autism Anglia Come Singing Equal Lives Hear for Norfolk

Category	Gateway organisations / group
People with disabilities	Independence Matters MS Society (Norwich and District Group) Norfolk Deaf Children's Society Royal Association for Deaf People (RAD) Stepping Stones The Benjamin Foundation Vision Norfolk West Norfolk Disability Information Service
People with learning difficulties	Affinity Trust ASD Helping Hands Mid MENCAP Norfolk Nansa Norfolk Learning Disability Partnership Norfolk SEN Network Norfolk SENDIASS Opening Doors (People First of Norfolk) SENSational families The Down's Syndrome Association (DSA)
People visiting mental health support groups	Better Together Norfolk Matthew Scheme MensCraft Norwich and Waveney Mind Stand Easy Suffolk Mind You Are Not Alone (YANA)
Black and minority ethnic people	Boloh Helpline New Routes Norfolk African Community Association Norwich InterFaith Link The Bridge Plus The Zainab Scheme
Traveller community	Friends, Families and Travellers National Federation of Gypsy Liaison Groups One Voice 4 Travellers The Traveller Movement
The military	Bridge for Heroes Help for Heroes Norfolk Army Cadets Op Courage Op Nova Outside the Wire PTSD Resolution SSAFA Norfolk The Royal British Legion – South Norfolk Veterans UK

Category	Gateway organisations / group
Residents who work outside South Norfolk	Federation of Small Businesses – East of England New Anglia Local Enterprise Partnership
People who work in South Norfolk but live elsewhere	GMB Norwich
Lesbian, Gay, Bisexual, Transgender, Queer, Intersex, Asexual (LGBTQIA+) community	BLAH LGBTQ+ Youth Evolve Norfolk LGBT+ Scheme OASIS Norfolk Proud Canaries The Proud Trust
Carers	Carers Matter Norfolk Caring Friends for Cancer Caring Together Charity Suffolk Family Carers The Carers Room Young Carers Matter Norfolk Your Priority Carers
Community interest groups	British Horse Society – East of England Community Action Norfolk Disabled Ramblers Diss and District Cycling Club (CC) East Anglian CC East of England Local Government Association Gay Outdoor Club – Norfolk Norfolk and Suffolk Long Distance Walkers Association (LDWA) Norfolk Community Foundation Norfolk Local Access Forum Ramblers (Norfolk area)
Community interest groups – environmental	Butterfly Conservation Norfolk Climate Norfolk CPRE Norfolk Extinction Rebellion Waveney East Friends of Norfolk's Environment Get Norfolk Greener Greening Wymondham Loddon Young Farmers Club Norfolk and Norwich Bat Group Norfolk Biodiversity Information Service Norfolk Biodiversity Partnership

Category	Gateway organisations / group
Community interest groups – environmental	Norfolk Birding Norfolk Climate Change Partnership Norfolk Coast Partnership Norfolk East Norfolk Conservation Group Norfolk Historic Environment Service Norfolk Rivers Trust Norfolk Wildlife Trust Norfolk Young Farmers Norwich Environmentalist Weekenders Norwich Friends of the Earth Norwich Fringe Group Royal Norfolk Agricultural Association The Broads Authority The Papillion Scheme Toad Watch Wymondham Nature Group Yare Valley Society Young Activist Network – Environmental Campaign Group Young Farmers and National Farmers Union (NFU)
Community interest group – socio-economic	Better Together Norfolk Hope into Action Norwich Norfolk Community Advice Network Norfolk Strategic Housing Partnership Nourishing Norfolk Network Shelter Norwich Solo Housing (East Anglia) St Martins Housing Trust The Edward Gostling Foundation The Feed The Magdalen Group West Norfolk Befriending WI Norfolk Federation Your Own Place



## **6 Section 47 Notice as placed in Eastern Daily Press (4 June 2025)**

Page 11



## Top of the pops!

Blazing blooms herald summer



### Arrivederci Sargent?

...as new boss finally signs

**BUSINESS PINK SUPER 12-PAGE SUPPLEMENT**

# Norfolk fishermen under fire

## Seafarers in major trial

Nine King's Lynn fishermen are to appear in court in a landmark case, accused of breaching regulations.

The men are all charged with failing to submit proper records of their activities, in a series of disparate breaches alleged to have taken place

**CHRIS BISHOP**

Chris.Bishop@newsquest.co.uk

between 2020 and 2022.

Lynn Magistrates' Court will host a preliminary hearing for the case tomorrow.

**Full story: Page 6**

# STAY COOL! AIRCON RE-GAS

# FAST-FIT

**WHILE YOU WAIT**

LOCATIONS ACROSS NORWICH  
ALSO KING'S LYNN, GORLESTON  
GT. YARMOUTH & LOWESTOFT

**FAST-FIT.CO.UK**

See our website for more details. Fast-Fit Exhausts Ltd. Part of The Shortis Group. E&OE. 2025

# NOTICE PUBLICISING A STATEMENT OF COMMUNITY CONSULTATION (SoCC) IN ACCORDANCE WITH SECTION 47(6) OF THE PLANNING ACT 2008.



Notice is hereby given that East Pye Solar Limited (Company Number 14684189), whose registered office is Unit 25.7 Coda Studies 189 Munster Road, London, England, SW6 6AW (the Applicant) has produced a Statement of Community Consultation (SoCC) in accordance with Section 47 of the Planning Act 2008.

### The Scheme

- The Applicant is proposing a new solar photovoltaic (PV) electricity generating station and other associated development comprising a battery energy storage system (BESS) substations, a new National Grid substation and associated grid connection, and other infrastructure known as East Pye Solar (the Scheme), located on land near Long Stratton in South Norfolk..
- The Scheme would produce approximately 500 MWac of renewable energy, support regional and national targets for reducing carbon emissions to net zero, contribute to improvements to local ecology and biodiversity, and deliver affordable energy.
- The Applicant will work closely with stakeholders and the local community to develop the Scheme, having regard to the feedback received during public consultation.
- The Applicant is a subsidiary of Island Green Power Group Limited (IGP).

### Statement of Community Consultation (SoCC)

- The Applicant has a duty to consult the local community under Section 47 of the Planning Act 2008. The Applicant has therefore prepared a SoCC that explains how people living in the vicinity of the proposed Scheme boundary will be consulted throughout the pre-application process, and how it intends to consult on the Preliminary Environmental Information Report (PEIR) that will inform the final Environmental Statement (ES). The consultation process is designed to provide information about East Pye Solar and give local communities the opportunity to have their say and help develop the final design for the Scheme.
- This notice provides formal notification of the publication of the SoCC which can be viewed and downloaded, free of charge, in the document library at [www.eastpyesolar.co.uk](http://www.eastpyesolar.co.uk). Printed reference copies of the SoCC are also available to view at all community access points listed below.

### The Statutory Consultation Process

- The Applicant will be holding the statutory consultation between 18 June and 6 August 2025. The Applicant will host a series of public information events, which will be open and accessible to all interested members of the local community.
- A copy of the PEIR, together with a PEIR Non-Technical Summary (NTS), the SoCC, and other consultation documents, plans and maps explaining the consultation process and details of the nature and location of the Scheme can be found on the Applicant's website in the document library at [www.eastpyesolar.co.uk](http://www.eastpyesolar.co.uk). These documents will be free to view and download from the Applicant's website from 18 June 2025.
- Hard copies of the SoCC and PEIR NTS will be available for inspection free of charge from 18 June until 6 August 2025 at all community access points listed below.
- A hard copy of the PEIR will only be available at Long Stratton Library for reference purposes from 18 June until 6 August 2025.
- Hard copies of the Phase Two Consultation Information Leaflet and the Consultation Feedback Form will be available to take away free of charge from all community access points from 18 June to 6 August 2025.
- Electronic copies of all the consultation documents, including the SoCC, PEIR and PEIR NTS, may be viewed on a computer at the below community access points from 18 June until 6 August 2025.
- While access to computers at these information points is free of charge, the venues require visitors to show proof of identity to use an on-site computer. A membership for the library may be required. We recommend contacting the venues to check the opening times prior to visiting. More information is available at [www.norfolk.gov.uk/libraries](http://www.norfolk.gov.uk/libraries).
- Locations with Open Library Access mean that you may access the library, its computers and spaces even when building is unstaffed. A membership for the library may be required. Further information can be found at [www.norfolk.gov.uk/openlibrary](http://www.norfolk.gov.uk/openlibrary)

Community Access Point	Current Opening Times
<b>Bungay Community Library</b> , Wharton Street, Bungay, NR35 1EL Telephone: 01986 506060	<b>Monday:</b> 09:00–14:30 <b>Tuesday to Saturday:</b> 09:00–17:00 <b>Sunday:</b> Closed
<b>Poringland Library</b> Overtons Way, Poringland, Norwich, NR14 7WB Telephone: 01508 494891	<b>Monday and Friday:</b> 08:00–14:00 (Open Library access) 14:00–19:00 (Staffed hours) <b>Tuesday and Wednesday:</b> 08:00–10:00 (Open Library access) 10:00–19:00 (Staffed hours) <b>Thursday:</b> 08:00–19:00 (Open Library access) <b>Saturday:</b> 08:00–10:00 (Open Library access) 10:00–16:00 (Staffed hours) <b>Sunday:</b> 10:00–16:00 (Open Library access)

- A hard copy of the PEIR and PEIR NTS can be provided on request, though there will be a cost associated with this. The cost of printing and delivering the PEIR will be confirmed prior to the start of the consultation period. (The charge will be calculated based on cost per individual volume requested).
- Hard copies of all other consultation materials, except the PEIR and PEIR NTS, can be requested free of charge during the consultation period by contacting the Applicant on 0808 281 3175 (free of charge), by post to FREEPOST East Pye Solar (you do not need a stamp) or by email at [info@eastpyesolar.co.uk](mailto:info@eastpyesolar.co.uk)
- The SoCC, Phase Two Consultation Information Leaflet, Feedback Form and Non-Technical Summary of the PEIR can be made available in hard copy, large print, audio or braille format, free of charge, by request to the Applicant on 0808 281 3175 (free of charge), by post to FREEPOST East Pye Solar (you do not need a stamp) or by email at [info@eastpyesolar.co.uk](mailto:info@eastpyesolar.co.uk)
- Requests for translated documents will be considered on a case-by-case basis. Requests for multiple copies of these documents will be considered on a case-by-case basis, and a reasonable charge may apply to cover printing and postage costs.
- Feedback can be provided through the consultation feedback form on the Applicant's website at [www.eastpyesolar.co.uk](http://www.eastpyesolar.co.uk) between 18 June and 6 August 2025. Hardcopy feedback forms will also be available at the community access points listed above and at the in-person public information events taking place.
- The consultation feedback form, responses to the consultation or other representations in respect of East Pye Solar can also be sent to the Applicant by email to [info@eastpyesolar.co.uk](mailto:info@eastpyesolar.co.uk) or by post to FREEPOST East Pye Solar (no stamp or further details required).
- Any response or representation in respect of East Pye Solar must be received by the Applicant on or before 23.59 on 6 August 2025.

### Public Information Events

- The Applicant will be hosting public information events to provide further opportunities to view the consultation documents as well as to speak with members of the project team. The details of the events are as follows:

Date and time	Location
<b>Wednesday 2 July 2025</b> 14:30–19:30	<b>Aslacton and Great Moulton Coronation Hall</b> Carr Lane, Great Moulton, Norwich, NR15 2LA
<b>Thursday 3 July 2025</b> 14:30–19:30	<b>Saxlingham Nethergate Village Hall</b> , Steward Close, Saxlingham Nethergate, Norwich, NR15 1AJ
<b>Thursday 10 July 2025</b> 14:00–19:00	<b>Long Stratton Village Hall</b> Ipswich Road, Long Stratton, Norwich, NR15 2TA
<b>Friday 11 July 2025</b> 14:30–19:30	<b>Brooke Village Hall</b> Norwich Road, Brooke, Norwich, NR15 1AB
<b>Saturday 12 July 2025</b> 11:00–15:00	<b>Hempnall Village Hall</b> Bungay Road, Hempnall, Norwich, NR15 2NG
<b>Tuesday 15 July 2025</b> 14:30–19:30	<b>Seething and Mundham Village Hall</b> Wheeler Lane, Seething, Norwich NR15 1EJ
<b>Monday 21 July 2025</b> 18:30–20:00	<b>Community Webinar via Zoom</b> Details of how to register can be found on our website.

- Details of how to register to attend the Community Webinar can be found on the Applicant's website [www.eastpyesolar.co.uk](http://www.eastpyesolar.co.uk)

### Get in touch by

Emailing: [info@eastpyesolar.co.uk](mailto:info@eastpyesolar.co.uk)

Calling our Freephone: 0808 281 3175 (lines are open Monday to Friday 09:00 to 17:00 except bank holidays. A voice message service will operate outside of these times)

Writing to us at: FREEPOST Eye Pye Solar (no stamp or further details required)

Visiting our website at: [www.eastpyesolar.co.uk](http://www.eastpyesolar.co.uk)

Community Access Point	Current Opening Times
<b>Long Stratton Library</b> The Street, Long Stratton, NR15 2XJ Telephone: 01508 530797	<b>Monday:</b> 08:00 – 11:00 (Open Library access) 11:00–19:00 (staffed hours) <b>Tuesday, Thursday:</b> 08:00–11:00 (Open Library access) 13:00–19:00 (staffed hours) <b>Wednesday, Friday:</b> 08:00–19:00 (Open Library access) <b>Saturday:</b> 10:00–11:00 (Open Library access) 11:00–16:00 (staffed hours) <b>Sunday:</b> 10:00 – 16:00 (Open Library access)
<b>Loddon Library</b> 31 Church Plain, Loddon, NR14 6EX Telephone: 01508 520678	<b>Monday, Thursday and Friday:</b> 08:00–10:00 (Open Library access) 10:00–19:00 (Staffed hours) <b>Tuesday and Wednesday:</b> 08:00–19:00 (Open Library access) <b>Saturday:</b> 08:00–13:00 (Open Library access) 13:00–16:00 (Staffed hours) <b>Sunday:</b> 10:00–16:00 (Open Library access)

## **7 Section 47 Notice as placed in Diss Express (6 June 2025)**

# NOTICE PUBLICISING A STATEMENT OF COMMUNITY CONSULTATION (SoCC) IN ACCORDANCE WITH SECTION 47(6) OF THE PLANNING ACT 2008.



Notice is hereby given that East Pye Solar Limited (Company Number 14684189), whose registered office is Unit 25.7 Coda Studios 189 Munster Road, London, England, SW6 6AW (the Applicant) has produced a Statement of Community Consultation (SoCC) in accordance with Section 47 of the Planning Act 2008.

## The Scheme

- The Applicant is proposing a new solar photovoltaic (PV) electricity generating station and other associated development comprising a battery energy storage system (BESS) substations, a new National Grid substation and associated grid connection, and other infrastructure known as East Pye Solar (the Scheme), located on land near Long Stratton in South Norfolk.
- The Scheme would produce approximately 500 MWac of renewable energy, support regional and national targets for reducing carbon emissions to net zero, contribute to improvements to local ecology and biodiversity, and deliver affordable energy.
- The Applicant will work closely with stakeholders and the local community to develop the Scheme, having regard to the feedback received during public consultation.
- The Applicant is a subsidiary of Island Green Power Group Limited (IGP).

## Statement of Community Consultation (SoCC)

- The Applicant has a duty to consult the local community under Section 47 of the Planning Act 2008. The Applicant has therefore prepared a SoCC that explains how people living in the vicinity of the proposed Scheme boundary will be consulted throughout the pre-application process, and how it intends to consult on the Preliminary Environmental Information Report (PEIR) that will inform the final Environmental Statement (ES). The consultation process is designed to provide information about East Pye Solar and give local communities the opportunity to have their say and help develop the final design for the Scheme.
- This notice provides formal notification of the publication of the SoCC which can be viewed and downloaded, free of charge, in the document library at [www.eastpyesolar.co.uk](http://www.eastpyesolar.co.uk). Printed reference copies of the SoCC are also available to view at all community access points listed below.

## The Statutory Consultation Process

- The Applicant will be holding the statutory consultation between 18 June and 6 August 2025. The Applicant will host a series of public information events, which will be open and accessible to all interested members of the local community.
- A copy of the PEIR, together with a PEIR Non-Technical Summary (NTS), the SoCC, and other consultation documents, plans and maps explaining the consultation process and details of the nature and location of the Scheme can be found on the Applicant's website in the document library at [www.eastpyesolar.co.uk](http://www.eastpyesolar.co.uk). These documents will be free to view and download from the Applicant's website from 18 June 2025.
- Hard copies of the SoCC and PEIR NTS will be available for inspection free of charge from 18 June until 6 August 2025 at all community access points listed below.
- A hard copy of the PEIR will only be available at Long Stratton Library for reference purposes from 18 June until 6 August 2025.
- Hard copies of the Phase Two Consultation Information Leaflet and the Consultation Feedback Form will be available to take away free of charge from all community access points from 18 June to 6 August 2025.
- Electronic copies of all the consultation documents, including the SoCC, PEIR and PEIR NTS, may be viewed on a computer at the below community access points from 18 June until 6 August 2025.
- While access to computers at these information points is free of charge, the venues require visitors to show proof of identity to use an on-site computer. A membership for the library may be required. We recommend contacting the venues to check the opening times prior to visiting. More information is available at [www.norfolk.gov.uk/libraries](http://www.norfolk.gov.uk/libraries).
- Locations with Open Library Access mean that you may access the library, its computers and spaces even when building is unstaffed. A membership for the library may be required. Further information can be found at [www.norfolk.gov.uk/openlibrary](http://www.norfolk.gov.uk/openlibrary)

Community Access Point	Current Opening Times
<b>Long Stratton Library</b> The Street, Long Stratton, NR15 2XJ Telephone: 01508 530797	<b>Monday:</b> 08:00 – 11:00 (Open Library access) 11:00–19:00 (staffed hours) <b>Tuesday, Thursday:</b> 08:00–11:00 (Open Library access) 13:00–19:00 (staffed hours) <b>Wednesday, Friday:</b> 08:00–19:00 (Open Library access) <b>Saturday:</b> 10:00–11:00 (Open Library access) 11:00–16:00 (staffed hours) <b>Sunday:</b> 10:00 – 16:00 (Open Library access)
<b>Loddon Library</b> 31 Church Plain, Loddon, NR14 6EX Telephone: 01508 520678	<b>Monday, Thursday and Friday:</b> 08:00–10:00 (Open Library access) 10:00–19:00 (Staffed hours) <b>Tuesday and Wednesday:</b> 08:00–19:00 (Open Library access) <b>Saturday:</b> 08:00–13:00 (Open Library access) 13:00–16:00 (Staffed hours) <b>Sunday:</b> 10:00–16:00 (Open Library access)

Community Access Point	Current Opening Times
<b>Bungay Community Library,</b> Wharton Street, Bungay, NR35 1EL Telephone: 01986 506060	<b>Monday:</b> 09:00–14:30 <b>Tuesday to Saturday:</b> 09:00–17:00 <b>Sunday:</b> Closed
<b>Poringland Library</b> Overtons Way, Poringland, Norwich, NR14 7WB Telephone: 01508 494891	<b>Monday and Friday:</b> 08:00–14:00 (Open Library access) 14:00–19:00 (Staffed hours) <b>Tuesday and Wednesday:</b> 08:00–10:00 (Open Library access) 10:00–19:00 (Staffed hours) <b>Thursday:</b> 08:00–19:00 (Open Library access) <b>Saturday:</b> 08:00–10:00 (Open Library access) 10:00–16:00 (Staffed hours) <b>Sunday:</b> 10:00–16:00 (Open Library access)

- A hard copy of the PEIR and PEIR NTS can be provided on request, though there will be a cost associated with this. The cost of printing and delivering the PEIR will be confirmed prior to the start of the consultation period. (The charge will be calculated based on cost per individual volume requested).
- Hard copies of all other consultation materials, except the PEIR and PEIR NTS, can be requested free of charge during the consultation period by contacting the Applicant on 0808 281 3175 (free of charge), by post to FREEPOST East Pye Solar (you do not need a stamp) or by email at [info@eastpyesolar.co.uk](mailto:info@eastpyesolar.co.uk)
- The SoCC, Phase Two Consultation Information Leaflet, Feedback Form and Non-Technical Summary of the PEIR can be made available in hard copy, large print, audio or braille format, free of charge, by request to the Applicant on 0808 281 3175 (free of charge), by post to FREEPOST East Pye Solar (you do not need a stamp) or by email at [info@eastpyesolar.co.uk](mailto:info@eastpyesolar.co.uk)
- Requests for translated documents will be considered on a case-by-case basis. Requests for multiple copies of these documents will be considered on a case-by-case basis, and a reasonable charge may apply to cover printing and postage costs.
- Feedback can be provided through the consultation feedback form on the Applicant's website at [www.eastpyesolar.co.uk](http://www.eastpyesolar.co.uk) between 18 June and 6 August 2025. Hardcopy feedback forms will also be available at the community access points listed above and at the in-person public information events taking place.
- The consultation feedback form, responses to the consultation or other representations in respect of East Pye Solar can also be sent to the Applicant by email to [info@eastpyesolar.co.uk](mailto:info@eastpyesolar.co.uk) or by post to FREEPOST East Pye Solar (no stamp or further details required).
- Any response or representation in respect of East Pye Solar must be received by the Applicant on or before 23.59 on 6 August 2025.

## Public Information Events

- The Applicant will be hosting public information events to provide further opportunities to view the consultation documents as well as to speak with members of the project team. The details of the events are as follows:
- Details of how to register to attend the Community Webinar can be found on the Applicant's website [www.eastpyesolar.co.uk](http://www.eastpyesolar.co.uk)

Date and time	Location
<b>Wednesday 2 July 2025</b> 14:30–19:30	<b>Aslacton and Great Moulton Coronation Hall</b> Carr Lane, Great Moulton, Norwich, NR15 2LA
<b>Thursday 3 July 2025</b> 14:30–19:30	<b>Saxlingham Nethergate Village Hall,</b> Steward Close, Saxlingham Nethergate, Norwich, NR15 1AJ
<b>Thursday 10 July 2025</b> 14:00–19:00	<b>Long Stratton Village Hall</b> Ipswich Road, Long Stratton, Norwich, NR15 2TA
<b>Friday 11 July 2025</b> 14:30–19:30	<b>Brooke Village Hall</b> Norwich Road, Brooke, Norwich, NR15 1AB
<b>Saturday 12 July 2025</b> 11:00–15:00	<b>Hempnall Village Hall</b> Bungay Road, Hempnall, Norwich, NR15 2NG
<b>Tuesday 15 July 2025</b> 14:30–19:30	<b>Seething and Mundham Village Hall</b> Wheelers Lane, Seething, Norwich NR15 1EJ
<b>Monday 21 July 2025</b> 18:30–20:00	<b>Community Webinar via Zoom</b> Details of how to register can be found on our website.

## Get in touch by

Emailing: [info@eastpyesolar.co.uk](mailto:info@eastpyesolar.co.uk)

Calling our Freephone: **0808 281 3175** (lines are open Monday to Friday 09:00 to 17:00 except bank holidays. A voice message service will operate outside of these times)

Writing to us at: **FREEPOST Eye Pye Solar** (no stamp or further details required)

Visiting our website at: [www.eastpyesolar.co.uk](http://www.eastpyesolar.co.uk)